



FREEDOM CAMPING

WAIROA

HAWKE'S BAY | NEW ZEALAND

CONTENTS

Things you need to know	1
Freedom Camping Locations	1
Dump Stations	1
Types of Freedom Camping	2
Liquor Ban	2
Dogs	3
Open Fires	3
Tsunami Risk	3
Freedom Camping Ambassadors	4
Mātaihai Reserves	4
Help Protect Our Shore Birds	7
Camping Map	8
Restricted Areas	10
Self-contained camping	10
All types of camping	12
DoC Campgrounds	13
Campgrounds & Holiday Parks	14
Prohibited Areas	16
Tuai	18
Wairoa	18
Mahia	20
History	26
Maps	27

THINGS YOU NEED TO KNOW

The Wairoa District is a beautiful part of Hawke's Bay and the East Coast - the perfect place to visit for responsible campers. Enjoy our spectacular outdoor environments with Te Urewera, Lake Waikaremoana and Mahia Peninsula right on our doorstep. We have amazing beaches, rivers, hills, lakes, waterfalls and much more. Here's how you can help to maintain the districts natural environment during your stay.

- Use public toilets available in the area
- Use local laundry facilities to wash your clothes
- Enjoy local facilities for bathing
- Dump your rubbish only at designated areas (e.g. Wairoa landfill)
- Ensure your black water (sewage) and grey water (shower, sink and hand basin water) holding tanks are discharged at designated wastewater dump stations

We also encourage campers to make use of designated commercial camping grounds and DOC campsites.

FREEDOM CAMPING LOCATIONS

Freedom camping is permitted in any local authority area within the District unless it is restricted or prohibited.

We care for our district, and appreciate your support in this by complying with the conditions set out in relation to each site.

Persons found camping on prohibited land will be issued with an infringement notice.

DUMP STATIONS

Please note some charges apply for dumping:

- Riverside Motorcamp, 19 Marine Parade, Wairoa: \$5 per casual dump or FREE (included in camping fee) if staying onsite
- War Memorial Park, Freyberg Street, Wairoa: FREE (no charge)
- Waikaremoana Holiday Park, SH38, Waikaremoana: FREE (no charge)

TYPES OF FREEDOM CAMPING



ALLOWED - SELF-CONTAINED CAMPING

Motorhomes with built-in kitchen, bathroom, fresh water tank and holding tanks for black and grey water.

Permitted for up to three days in any area owned by the local authority within the district unless it is prohibited.



RESTRICTED - NON SELF-CONTAINED CAMPING

Modified car, van or vehicle without some or all of the facilities needed for day to day living or sleeping in a tent with no day to day amenities.



Non self-contained camping is only allowed in restricted areas.

So if you are travelling in a vehicle that is not a certified fully self-contained vehicle or sleeping in a tent, you are only allowed to camp in restricted areas which are marked with green signs.



PROHIBITED

Neither self-contained nor non self-contained camping is allowed in this area.

LIQUOR BAN

Please note a liquor ban applies as follows:

Wairoa (24 hours per day 365 days of the year) bounded by:

- Marine Parade from Murrae Street to King Street
- Queen Street from Murrae Street to King Street
- Riverbank from Murrae Street to King Street and all associated alleyways and car parks

Mahia (24 hours a day from December 20th to January 20th every year):

- The whole of the Mahia Peninsula and surrounding area encompassed within the coastline from Nuhaka to Paritu.

DOGS

Dogs are permitted within the freedom camping areas as long as they are tied up or on a leash at all times.

OPEN FIRES

There are rules and restrictions for campfires. You must check the fire season and rules before you light a fire.

Fire Emergency New Zealand

www.firepermit.nz

Before you light a fire

- Check weather and wind speed and direction. Only light your fire when there is little or no wind forecast.
- Avoid areas near your tent, structures, vehicles, shrubs and trees, clear combustible fuel including to at least three metres on all sides.
- Keep your campfire small.
- Have some way to put out any unplanned fires.

When your fire is lit

- Never leave a campfire unattended.
- If a change in the wind direction or speed makes your fire unsafe — put it out.
- Use plenty of water to extinguish all the embers of your campfire. If your camp is not near a water source, use dirt to extinguish the embers and mix until cool.
- Don't bury your fire as it could continue to smoulder and reignite.

Dial 111 immediately in an emergency. Anything that could cause loss of life, serious injury or loss of property is a fire emergency.

TSUNAMI RISK

Often natural warnings, like any of the below, will be the only warning of a tsunami, so don't wait for an official warning, go immediately to high ground or, if the surrounding area is flat, go as far inland as possible. Signs could be:

- Strong earthquake shaking, making it hard to stand up or walk steadily
- Weak, rolling earthquake shaking which is unusually long - a minute or more
- Unusual sea behaviour, such a sudden sea level fall or rise, or the sea making loud and unusual noises, especially roaring like a jet engine.

FREEDOM CAMPING AMBASSADORS

The Wairoa District Council has partnered with local iwi organisations, Rongomaiwahine Iwi Trust and Mahia Māori Committee, to develop and implement a Freedom Camping Ambassador initiative.

This initiative will be particularly focused on the Mahia Peninsula and Wairoa township, which are the most popular areas for freedom camping in the Wairoa district.

Ambassadors will monitor campsites, rubbish, recycling and toilet facilities. Primarily their role is to have an education and visitor experience focus and will positively engage with freedom campers and visitors to encourage them to camp in the right locations and to vacate areas which are restricted or prohibited.

This initiative will be delivered during the peak season of November 2020 to April 2021.

If you are found camping in a prohibited area and are asked to move on to a freedom camping area, please comply.

People found camping on prohibited land can be issued with an infringement notice of up to \$200.

MĀTAITAI RESERVES

Mātaimai reserves are developed and managed by tangata whenua. They recognise and provide for:

- the special relationship between tangata whenua and their traditional fishing grounds
- non-commercial customary fishing

Mātaimai reserves **ALLOW:**

- customary fishing
- recreational fishing without needing a permit.

Mātaimai reserves **DON'T:**

- allow commercial fishing (unless reinstated by a regulation)
- allow landing of commercial catch or holding pots
- affect commercial fishing vessel activities like transiting and mooring
- affect recreational fishing rules unless there are bylaws in place
- control whitebait fishing

- affect access to beaches and rivers
- change restrictions on access to private land.

Some mātaimai reserves have bylaws that tangata kaitiaki (guardians) use to manage non-commercial fishing. Bylaws apply to all people fishing in a mātaimai reserve.

ROLE OF TANGATA KAITIAKI

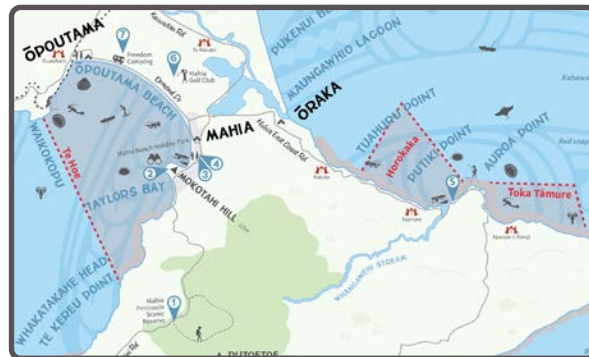
The tangata kaitiaki appointed to a reserve can:

- issue customary fishing authorisations for customary food gathering – not just for hui and tangi
- recommend changes to the recreational and customary fishing rules in the reserve – these may become bylaws
- recommend reinstatement of limited commercial fishing.

MĀTAITAI RESERVES IN MAHIA

There are three mātaimai reserves in Mahia:

- Te Hoe
- Horokaka
- Toka Tāmure



Only two of the mātaimai reserves, Horokaka and Toka Tāmure, have by-laws.

Mātaimai Horokaka Bylaws

• Bylaw 1—Prohibition on Taking Certain Species

A person must not take any of the following species from the Horokaka Mātaimai Reserve: Beach cast seaweed, Cockles, Conger eel, Deepwater clam, Freshwater eel, Karengo seaweed, Mussels, Packhorse rock lobster, Paua, Pipi, Sea cucumber, Seahorse, Surf clams, Tuatua.

- **Bylaw 2—Prohibition on Taking Spiny Rock Lobster During Closed Season**

A person must not, on any day between 1 May and 30 September of any year, take any spiny rock lobster from the reserve.

- **Bylaw 3—Maximum Daily Limit for Spiny Rock Lobster**

A person must not, on any day between 1 October and 30 April of any year, take more than 3 spiny rock lobsters from the reserve.

- **Bylaw 4—Prohibition on Taking Kina During Closed Season**

A person must not, on any day between 1 April and 30 September of any year, take any kina from the reserve.

- **Bylaw 5—Maximum Daily Limit for Kina**

A person must not, on any day between 1 October and 31 March of any year, take more than 25 kina from the reserve.

- **Bylaw 6—Prohibition on Using Underwater Breathing Apparatus**

A person must not use underwater breathing apparatus to take fish, shellfish or seaweed from the reserve.

- **Bylaw 7—Prohibition on Using Loops**

A person must not use a loop to take spiny rock lobster from the reserve.

Mātaitai Toka Tāmure Bylaws

- **Bylaw 1 — Prohibition on taking certain species**

A person must not take any of the following species from the Toka Tāmure Mātaitai Reserve: Beach cast seaweed, Cockles, Conger eel, Deepwater clam, Freshwater eel, Karengo seaweed, Mussels, Packhorse rock lobster, Paua, Pipi, Sea cucumber, Seahorse, Surf clams, Tuatua.

- **Bylaw 2 — Maximum daily limit for spiny rock lobster**

A person must not, on any day, take more than three spiny rock lobsters from the reserve.

- **Bylaw 3 — Maximum daily limit for kina**

A person must not, on any day between 1 August and 29 February of any year, take more than 25 kina from the reserve.

- **Bylaw 4 — Prohibition on taking kina during closed season**

A person must not, on any day between 1 March and 31 July of any year, take any kina from the reserve.

- **Bylaw 5 — Prohibition on using underwater breathing apparatus**

A person must not use an underwater breathing apparatus to take fish, shellfish or seaweed from the reserve.

- **Bylaw 6 — Prohibition on using loops**

A person must not use a loop to take spiny rock lobster from the reserve.

HELP PROTECT OUR SHORE BIRDS

The shoreline throughout Mahia-mai-tawhiti is home to a number of threatened and important shorebirds, including tūturiwhatu or the New Zealand dotterel, black backed, red & black beaked gull, oyster catcher, pied stilt, banded dotterel, reef heron, plover and others.

Our actions can have a devastating impact on these birds.

New Zealand dotterel and banded dotterel for example nest above the high tide mark during summer and their nests can be almost impossible to spot.

As kaitiaki (guardians) of the area, we ask our manuhiri (visitors/guests) and whānau (family) to avoid riding motorbikes and horses above the high tide mark and please keep your dogs under control at all times. Our actions effect on nests and chicks if we are not all playing our part to protect these taonga (treasures).

More information about New Zealand dotterels and a guide to New Zealand shorebirds can be found on the Department of Conservation website.

🌐 www.doc.govt.nz

CAMPING MAP



Some areas in the Wairoa District allow all types of camping (self-contained and non self-contained), other areas only allow self contained camping.

Please refer to the map above and the corresponding maps on the following pages for the exact location of the camping areas.

- 1 - 3** Self-contained camping only
- 4 - 5** All types of camping
- 6 - 7** DOC Campgrounds
- 8 - 11** Campgrounds & Holiday Parks

RESTRICTED AREAS

Self-contained camping only



WAIROA | RESTRICTED AREAS



1 | PILOT HILL

Only fully **SELF-CONTAINED** camping is **PERMITTED** in the area marked **BLUE**. Camping is prohibited outside the area marked blue.



2 | WAR MEMORIAL PARK

Only fully **SELF-CONTAINED** camping is **PERMITTED** in the area marked **BLUE**. Camping is prohibited outside the area marked blue.

MAHIA | RESTRICTED AREAS



3 | ORMOND DRIVE

Only fully **SELF-CONTAINED** camping is **PERMITTED** in the area marked **BLUE**. Camping is prohibited outside the area marked blue.



3 | ORMOND DRIVE

Only fully **SELF-CONTAINED** camping is **PERMITTED** in the area marked **BLUE**. Camping is prohibited outside the area marked blue.



3 | ORMOND DRIVE

Only fully **SELF-CONTAINED** camping is **PERMITTED** in the area marked **BLUE**. Camping is prohibited outside the area marked blue.

RESTRICTED AREAS

All types of camping



WAIROA | RESTRICTED AREAS



4 | CLYDE COURT

SELF-CONTAINED and **NON SELF-CONTAINED** camping is **PERMITTED** in the area marked **GREEN**.

MAHIA | RESTRICTED AREAS



5 | ORAKA RESERVE

SELF-CONTAINED and **NON SELF-CONTAINED** camping is **PERMITTED** in the area marked **GREEN**.

DOC CAMPGROUNDS

All types of camping



WAIKAREMOANA RESTRICTED AREAS



6 | ROSIE BAY

Basic Campsite offering 6 non-powered sites. Booking's not required - first come, first served.

📍 SH38, 10kms south of Lake Waikaremoana Holiday park.



7 | MOKAU LANDING

Standard campsite offering 40 non-powered sites. Booking's not required - first come, first served.

📍 Drive west around the lake approx. 10kms from SH38 at Aniwanui.

For more information about Department of Conservation campsites:

🌐 www.doc.govt.nz

CAMPGROUNDS & HOLIDAY PARKS

All types of camping



WAIKAREMOANA



8 | WAIKAREMOANA HOLIDAY PARK

📍 6249 Lake Road (SH38), Te Urewera 4195

☎ +64 6 837 3826

🌐 www.waikaremoana.info

WAIROA



9 | WAIROA RIVERSIDE MOTOR CAMP

📍 19 Marine Parade, Wairoa 4108

☎ +64 6 838 6301

🌐 www.riversidemotorcamp.co.nz

MŌRERE



10 | MŌRERE HOLIDAY PARK

📍 3983 -3987 State Highway 2, Mōrere 4078

☎ +64 6 837 8792

🌐 www.morerelodge.co.nz

MAHIA



11 | MAHIA BEACH HOLIDAY PARK

📍 43 Moana Dr, Mahia

☎ +64 6 837 5830

🌐 www.mahiaholidaypark.nz

★ For more information about accommodation options in the Wairoa District, please visit the Wairoa i-SITE.



Wairoa i-SITE

📍 Cnr SH2 & Queen Street, Wairoa

🌐 www.visitwairoa.co.nz

✉ isitewairoa@wairoadc.govt.nz

☎ 0800 WAIROA (924 762)

☎ +64 6 838 7440



PROHIBITED AREAS



Any kind of camping, be it in a self-contained or non self-contained vehicle or in a tent is prohibited in these areas. If found camping in a prohibited area, an infringement notice will be served.

Please refer to the map above and the corresponding maps on the following pages for the exact location of the prohibited areas.

- 1 Tuai
- 2 - 6 Wairoa
- 7 & 8 Nuhaka-Opoutama Road/Blacks Beach
- 9 - 11 Mahia
- 12 Māhanga
- 13 - 22 Mahia East Coast Road

PROHIBITED AREAS

NO CAMPING in the areas marked **RED**.



TUAI | PROHIBITED AREAS



1 | TUAI ESPLANADE RESERVE (WHAKAMARINO LODGE AREA)

This area is a safe play space for children and area or day trippers.

WAIROA | PROHIBITED AREAS



2 | OLD WHAKAMAUI ROAD

To allow for the continued and extended use for recreational users of the reserve and day trippers.



3 | CLYDE COURT (TOILETS LAWN AREA)

This part of the site is a commercial area used for markets and is not appropriate for camping.



4 | ALEXANDRA PARK (SKI CLUB TO PLAYGROUND)

This area is used for community events and as a safe play space for children.



5 | LIGHTHOUSE RESERVE

This area is a safe play space for children. Access to this site from road reserve is topographically difficult and could result in damage to vehicles & the reserve.



6 | ESPLANADE RESERVE

Access to the identified areas of this reserve is blocked by other prohibited sites. The proximity of the reserve to the river makes the ground soft, camping on such ground may damage vehicles and the reserve.



9 | ORMOND DRIVE

This area may from time to time be used for the landing of rescue helicopters, and as such must be kept clear at all times.

MAHIA | PROHIBITED AREAS



7 | BLACKS BEACH

The area in red needs to be kept clear for the use of recreational users of the reserve, as well as for road safety reasons.



10 | MOKOTAHİ

This area is reserved for boat launching and retrieval, parking, turning of long vehicles, recreational use and as a safe play space for children.



8 | OPOUTAMA LOOKOUT

The area in red needs to be kept clear for the use of recreational users of the reserve, as well as for road safety reasons.



11 | TAYLORS BAY

This area must be kept clear to allow for the continued and extended use for recreational users of the reserve and day trippers.



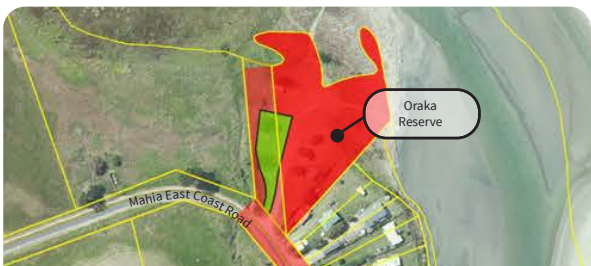
12 | MĀHANGA

This area should be kept clear to allow for parking of boat trailers and turning of long vehicles, and for recreational users of the reserve.



15 | KAIUKU ESPLANADE RESERVE

This area must be kept clear to allow for people to access waahi kai areas and for recreational users of the reserve and as a safe play space for children.



13 | ORAKA RESESRVE

The area as identified in red must be kept clear to allow for people to access waahi kai areas and for recreational users of the reserve and as a safe play space for children.



16 | ESPLANADE RESERVE

This land contains Urupa (burials) and it is considered inappropriate to allow camping in such sensitive areas.



14 | ORAKA ROAD

This area must be kept clear to allow for people to access waahi kai areas and for recreational users of the reserve.



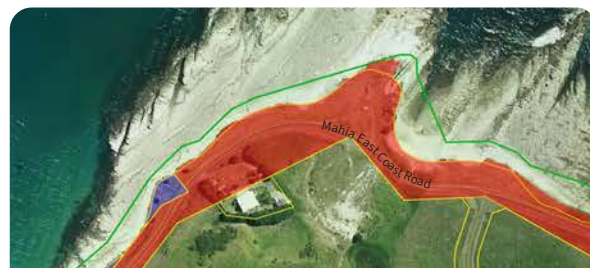
17 | WHANGAWEHI URUPA

This land contains Urupa (burials) and it is considered inappropriate to allow camping in such sensitive areas.



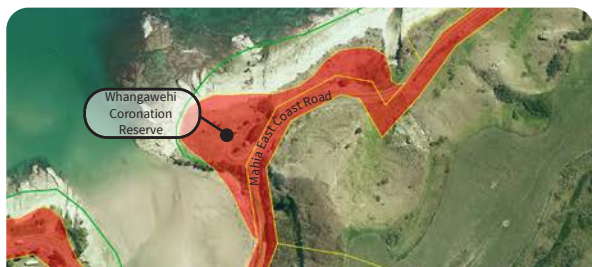
18 | WHANGAWEHI RESERVE

This area should be kept clear to allow boats to be launched and retrieved, for the parking of trailers and for turning of long vehicles.



21 | SNAPPER ROCK

This area must be kept clear to allow for people to access waahi kai areas and for recreational users of the reserve and as a safe play space for children.



19 | WHANGAWEHI CORONATION RESERVE

This area must be kept clear to allow for people to access waahi kai areas and for recreational users of the reserve and as a safe play space for children.



22 | NUKUTAUURUA ROAD

This area has been identified as historically sensitive being the location of previous battles, containing places for the preparation of the dead for burial.



20 | AUROA POINT/THE CRUSHER

This area must be kept clear to allow for people to access waahi kai areas and for recreational users of the reserve and as a safe play space for children.

★ For information about freedom camping you can also visit the Wairoa District Council and Wairoa i-SITE websites.



Wairoa District Council
 ● www.wairoadc.govt.nz,
 search for #freedomcamping



Wairoa i-SITE
 ● www.visitwairoa.co.nz

PRACTICAL INFORMATION

SUPERMARKET

WAIROA

New World

📍 41 Queen St, Wairoa 4108

☎ +64 6 838 8019

🕒 Mon - Sun 7am - 7pm

CAMPING EQUIPMENT

WAIROA

Angus Gemmell Ltd

📍 176 Marine Parade

☎ +64 6 838 7577

🕒 Mon - Fri 8am - 5pm

Estway Sport

📍 200 Marine Parade

☎ +64 6 838 8677

🕒 Mon - Fri 9am - 5pm, Sat 9am - 12pm

Farmlands

📍 53 Bridge St

☎ +64 6 838 7209

🕒 Mon - Fri 8am - 5pm, Sat 9am - 12pm

Johansen Hammer Hardware

📍 90 Marine Parade

☎ +64 6 838 7069

🕒 Mon - Fri 8.30am - 5pm, Sat 9am - 5pm,
Sun 10am - 3pm

RUBBISH & RECYCLING

WAIROA

Wairoa Landfill & Recycling Centre

📍 Fraser Street, Wairoa

☎ +64 6 838 8456, +64 27 7009 051

🕒 Tue, Thur, Sat, Sun 8am - 2pm
(closed some public holidays)

EFTPOS available

HEALTH SERVICES

Queen Street Practice

📍 36 Kitchener Street (Wairoa Hospital)

☎ +64 6 838 8333

🕒 Mon - Fri 8.30am - 5pm

Wairoa Hospital

📍 36 Kitchener Street

☎ +64 6 838 7099

Wairoa Pharmacy

📍 Cnr Paul & Queen Street

☎ +64 6 838 7408

🕒 Mon - Fri 9am - 5pm, Sat 9am - 12pm

EMERGENCIES

★ For any kind of emergency please dial 111

Wairoa Police Station

📍 72 Queen Street, Wairoa 4108

☎ +64 6 838 8345

ANIMAL CONTROL

Have you come across roaming stock or dogs? You can contact Wairoa District Council's animal control team 24/7 on 06 838 7309.

★ For information about clubs, activities & events in the Wairoa District please visit the Wairoa i-SITE.

Wairoa i-SITE

📍 Cnr SH2 & Queen Street, Wairoa

🌐 www.visitwairoa.co.nz

✉ isitewairoa@wairoadc.govt.nz

☎ 0800 WAIROA (924 762)

☎ +64 6 838 7440

