



WAIROA RECOVERY

TE WAIROA KA ORA TE WERO TE TAKI
STRENGTH x UNITY x RESILIENCE

TUESDAY, JUNE 20TH 2023 NEWSLETTER 2



Tuia ki te rangi te rangi e tū nei
Tuia ki te whenua e takoto nei
Tuia ki te moana pōkarekare nei
E rongō i te pō i te ao, i te ao i te pō nei e

It is written in the heavens, on the earth and in the seas, and felt in the reflection of night and day. We are the world around us, and all things are intrinsically connected.

RECOVERY INFORMATION

For information and help relating to Cyclone Gabrielle please contact us:

- Online form via WDC website www.wairoadc.govt.nz/contact-us/customer-service-request/
- Phone 06 838 7309
- Email recovery@wairoadc.govt.nz
- In-person at the Recovery Team Office at the Wairoa Airport (end of Airport Road) our office hours are Monday to Friday 10am-2pm.

You can also pop into the WYAT office on Marine Parade for support and funding assistance.



WAIROA RECOVERY

KA MATE KAINGA TAHI, KA ORA KAINGA RUA

OUT OF ADVERSITY COMES OPPORTUNITY

This proverb inspires an opportunity to build a brighter future for us all. Working together at a local level and weaving in regional and national support is critical to an efficient and effective recovery.

The Government's announcement of the Land Risk Categories update is important for us all. To find out more about what this means please come along to one of the scheduled open meetings this Wednesday June 21st, at the Presbyterian Church Hall, on Queen Street 2pm or 5pm. These are important meetings and there will be representatives from HBRC, NZ Insurance Council, IAG and others who will be able to also help us understand the impacts for us here in Wairoa. Council will be in touch with affected property owners about the details of the engagement process and how people can be involved. For more information go to <https://www.hastingsdc.govt.nz/land-categorisation-hb>

It's heartening to see the TAS Temporary Accommodation Supply rolling into town due to the hard work of Enabled, Wairoa District Council and MBIE (Ministry of Business Innovation & Employment).

Tātau Tātau o Te Wairoa is also working with Toitū Tairāwhiti and has supplied 12 Pods with plans to bring in more.

We are grateful for all the donations made to the Wairoa Mayoral Relief Fund of which we have now distributed \$628,000 directly to impacted families.

There are so many of you working hard, and we acknowledge you all, our community agencies continue working in their dedicated areas to pull everything together. Thank you to Te Whare Maire o Tapuae, Kahungunu Executive, our health services and providers, our Iwi Ngāti Pāhauwera, Te Iwi o Rakaipaaka our Rural Support agencies, Hookmade and many more. We appreciate all your mahi.

If you would like to receive the Wairoa Recovery Newsletter, please send your email address to:
recovery@wairoadc.govt.nz



COMMUNITY ENGAGEMENT PROCESS UNDERWAY

A local community engagement process for people impacted by the Government's Land Categorisation following Cyclone Gabrielle will begin on Wednesday (June 21).

An independent review of the provisional land categorisation data is now complete, with the provisional data now assured following a robust independent review process.

Most of Wairoa's North Clyde residential area and along the Frasertown Road remains provisionally categorised as 2A with small pockets of 2P category land near Frasertown. Around 100 previous provisional categorisations have been amended or removed.

All property categorisations are provisional until the engagement process has been completed.

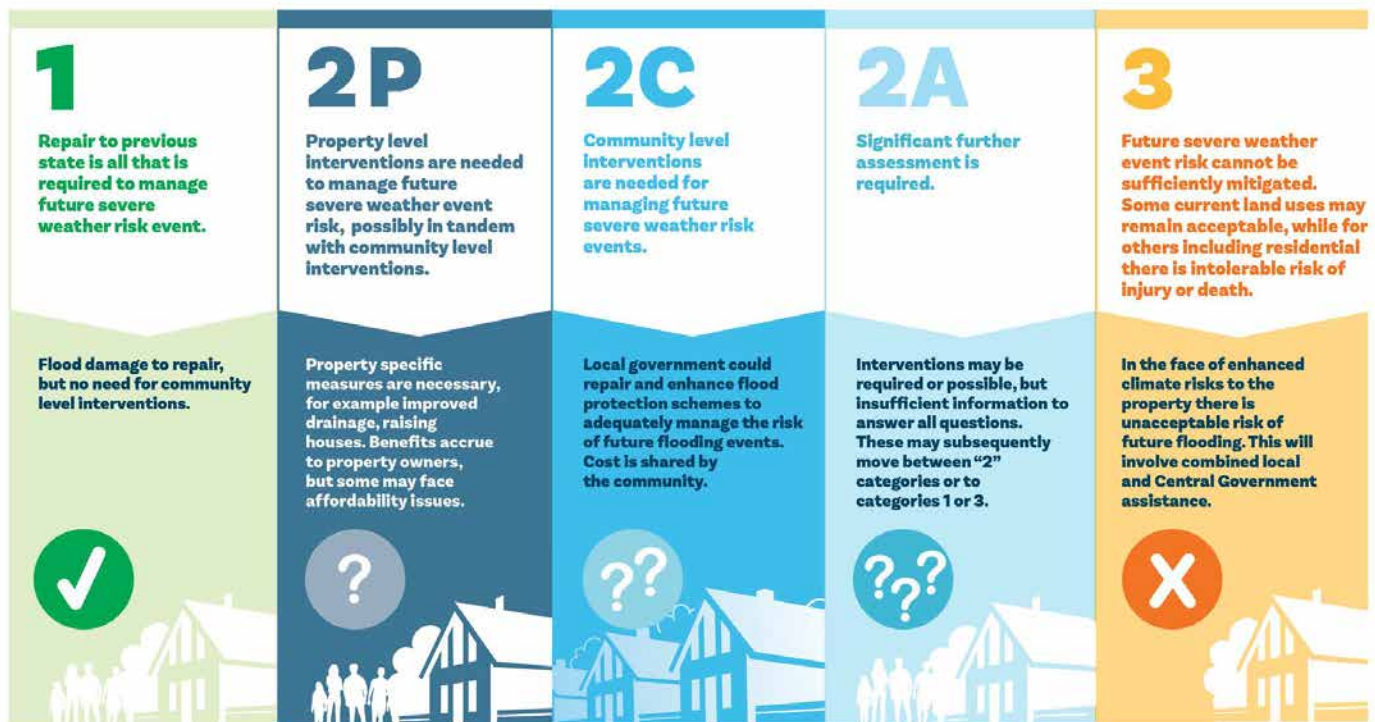
Wairoa has been identified as a priority for flood mitigation investment. By categorising most of the flood-affected areas of Wairoa township as 2A, a full range of mitigation approaches can be explored. Wairoa's flood risk relates to the lower area of the Wairoa River where the town is located, as the awa looks to 'cut off' a loop in the river just to the northwest of the town when in flood, running through North Clyde as it finds its way back to the river.

The Hawke's Bay Regional Council and its predecessor Catchment Board have considered flood protection options for Wairoa in the past, focussing on the formation of secondary flow paths and/or stop-banking to protect the town.

The land categorisation community engagement hui will begin on Wednesday, June 21, with hui from 2-3.30 pm and 5-6.30 pm at the Wairoa Presbyterian Hall, Queen Street. Hui will also be held in North Clyde as part of the community engagement process. Whānau who are directly affected are encouraged to attend.

Land categories explained

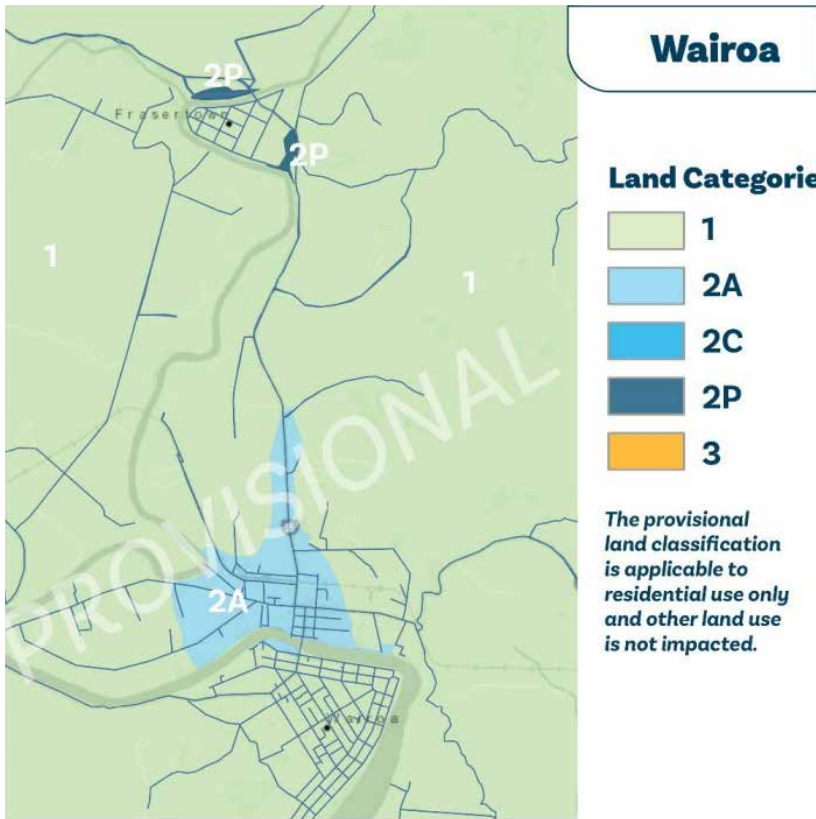
Note: Land categorisations for properties is provisional until people in those areas have been consulted.



Prepared by Hawke's Bay Regional Council
0723HBRCLandCat



CONTACT US Online form via WDC website: www.wairoadc.govt.nz/contact-us/customer-service-request
Phone: 06 838 7309 | Email: recovery@wairoadc.govt.nz | In-person: at the Wairoa Airport (end of Airport Road)

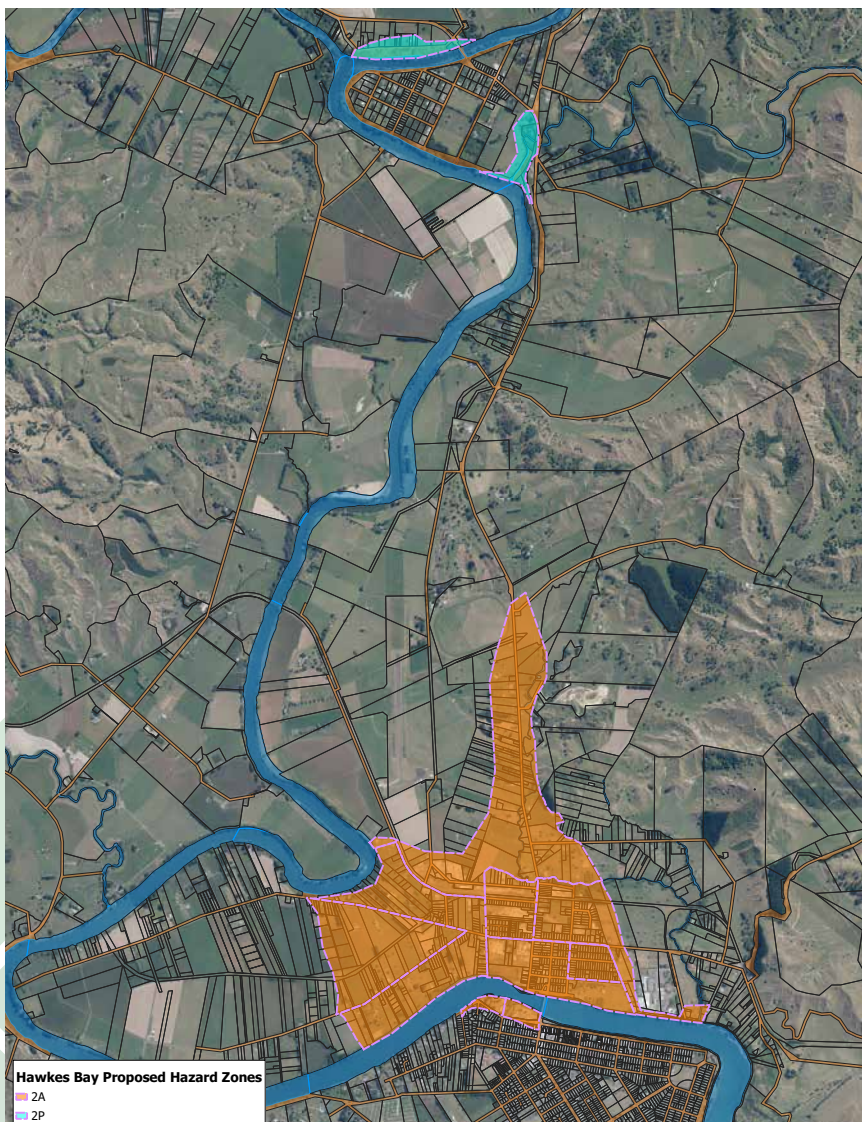


LAND CATEGORISATION COMMUNITY ENGAGEMENT HUI

To discuss what land categorisation means for affected Wairoa residents - we want to make sure your voice is heard.

Wednesday June 21st

We will be holding two hui at the Wairoa Presbyterian Hall in Queen Street. The first hui will run from 2pm-3.30pm and the second from 5pm-6.30pm.



THE WAIROA RECOVERY TEAM HAVE RELOCATED TO A NEW SPACE

WE ARE NOW SITUATED AT THE WAIROA AIRPORT

We are open Monday to Friday from 10am-2pm. Please pop over to see us.

You can also pop in and see WYAT at 86 Marine Parade for funding support anytime during business hours.

WAIKARE GORGE REALIGNMENT AND NEW BRIDGE

Waka Kotahi NZ Transport Agency has reached a major milestone in its work to strengthen the resilience of State Highway 2, with resource consent for a new Waikare Gorge bridge now lodged.

The project will see a new 160-metre bridge built across the Waikare Gorge and a 3.9km road realignment. The proposal will see six kilometres of the existing State Highway 2 bypassed, including the slip and rockfall-prone Waikare Gorge.

Waka Kotahi has acknowledged the devastation caused by the cyclone and the destruction of the gorge bridge has shown just how crucial the realignment project is to making this section of the road resilient, safer and with more consistent travel times.

The Waka Kotahi NZ Transport Agency project team



has had several discussions and meetings with landowners, key stakeholders and iwi partners to gather their views. An arch bridge construction (pictured) has been identified as the preferred bridge option. This type of structure will allow the bridge to be built without impacting the river or the gorge itself.

The resource consent has been submitted to Hawke's Bay Regional Council. Once design and consent have been completed, the project will be considered for construction funding.

The project was being worked on before the cyclone, and funding to date has come as part of the Provincial Growth Fund, first announced in 2020. Progress has been made possible largely thanks to the continued support from local communities.

The past four months have shown that whenever this section of SH2 is closed, for whatever reason, the impact on Wairoa and Hawke's Bay is huge. Even before the cyclone, this area has been prone to slips and rockfall, so a safer and more resilient journey over the gorge should help with more consistent and reliable journeys.



BUSINESSES IMPACTED



HOMES IMPACTED



White: Liveable (habitable).
Yellow 1: Restricted access to part/s of the building (may be habitable).
Yellow 2: Restricted access – short- term only (non-habitable).
Red: No access (not habitable).



MAYORAL MESSAGE

It has been pleasing to see the Government is committed to helping fund the enormous job of cleaning up and repairing in the wake of Cyclone Gabrielle. We really do need all the support we can get. We also need to ensure the korero around our needs takes place with our community rather than us being told what we need by someone in an office in Wellington.

I am also pushing hard to get more information on why Wairoa flooded so badly. Until we know the cause, we can't work on a solution. Our focus is on our people, getting whānau back into their homes, and supporting our community, businesses, and farms to rebuild.

The Government has announced categories for affected properties post-cyclone and flooding. These guidelines will determine whether people will be able to remain living in cyclone-hit areas, whether they are considered unsafe, or if interventions will be needed.

We know our communities are very anxious about this and have asked for as much detail and information as possible to be made available.

I encourage everyone, especially those in stickered homes, to apply for the Wairoa Mayoral Relief fund. We have already distributed more than \$600,000 to our community and have more funding to allocate.

Applications can now be made by scanning the QR Code or via the following link: <https://www.wairoadc.govt.nz/our-council/> Thank you so much to everyone who has supported our fund. Your generosity is overwhelming. I would like to particularly acknowledge the New Zealand Red Cross and its ongoing financial support to help meet the needs of our communities.

People can also apply to the Hawke's Bay Disaster Relief Fund which has recently approved a new funding eligibility to \$10,000. This fund provides financial support to residents and ratepayers of the Hawke's Bay region affected by Cyclone Gabrielle and provides for damage or hardship incurred due to the cyclone. Apply at hbrc.info/HBDisasterFund or call into the WYAT building on the main street, in the former Westpac building, for assistance.

INSULATION EXEMPTION

For owners of flood-affected homes, the rebuilding process may be the perfect opportunity to insulate your house.

Under the Building Act, insulating exterior walls of an existing house generally requires Building Consent as there are many areas where this can have adverse effects on buildings, such as incorrect installation leading to moisture being trapped in wall cavities, causing decay.

The Wairoa District Council building team acknowledges it is a prime opportunity for homeowners to insulate the exterior walls while the wall linings have been removed.

Please contact the building team to discuss how you plan to install your insulation and the possibility of a Building Consent exemption.

MOISTURE LEVEL VARIANCES

The moisture level requirements of internal walls at flood-affected properties differ between native timber and pine timber framing.

For homes with native timber, the moisture level needs to be in the 20-25% range to enable a final verification moisture check to be carried out. Buildings with pine framing are required to be at 18%.

If you have native timbers in your house, please contact the Wairoa District Council to arrange for a moisture check. A building inspector will conduct an accurate moisture check using a calibrated moisture reader and advise what timber type is involved and when you should call again if required.



MAYORAL RELIEF FUND

\$628,000

DISTRIBUTED

To apply scan this QR Code or visit: <https://www.wairoadc.govt.nz/our-council/cyclone-gabrielle/wairoamayoral-relief-fund>



BUSINESS BACK

CARTERS WAIROA

Carters Building Supplies is for Wairoa first and foremost.

The McDonald Street North Clyde building supplies business had more than half a metre of floodwaters wash through the entire worksite, including the buildings and yard.

The Wairoa-born and bred manager, Jamie Tollison and her team of six

spent two weeks cleaning up before being back open to the public to support the district's rebuild.

Carters Wairoa is now back on track, full of stock and ready to help and provide any materials required.

Jamie says Carters is committed to supplying and rebuilding our town as a business with a loyal, dedicated,

trustworthy team.

"Thank you to our family, friends, farmers, fencers and builders who helped us, we appreciate you all. We would also like to extend our heartfelt thanks and appreciation for all the hard mahi behind the scenes which has gone on to get everyone to where they are at today."



BUDGET 2023 A STEP IN THE RIGHT DIRECTION FOR HAWKE'S BAY RECOVERY

The announcement of Budget 2023 is another critical step forward in enabling Te-Matua-a-Māui Hawke's Bay to deliver a recovery that is locally-led, regionally coordinated and government supported, says Hawke's Bay's leaders. Through Budget 2023, Minister

of Finance and Minister for Cyclone Recovery, Grant Robertson, confirmed the Government will set aside \$6 billion for delivery of the National Resilience Plan, enabling the rebuild of infrastructure destroyed across the country by February's severe

weather events. This funding is in addition to the \$941 million for the previously announced Cyclone Recovery Package. Initial assessments have indicated that Hawke's Bay will require \$1.374 billion to deliver the most immediate recovery priorities for this year alone.

FARMING CHALLENGES

Many farmers will face extra challenges with feed supply because of Cyclone Gabrielle, plus the roading network is still vulnerable and it won't take much rain to cause more closed roads and disruption through the winter.

The earlier farmers make decisions, the more control they will have over winter feeding which will affect animal welfare, avoid unnecessary stress and safeguard returns.

Farmers are encouraged to re-consider the risks and measures in place to manage these.

This year many farmers may face one of more or the following:

- Holding stock on farm for longer than normal, which has increased feed demand.
- Loss of pasture and crops available because of slips, siltation, other damage and restricted internal access.
- Challenges to winter grazing management.

*To make robust decisions, doing a simple feed stocktake along with a feed budget can help you plan for this winter's additional challenges. Collating a stocktake will help you to crunch the numbers and make robust decisions. Talk with your farm adviser, Beef + Lamb NZ or Dairy NZ

regional advisers for practical advice.

*The National Feed Coordination Service helps match people with grazing or supplementary feed for sale to those who need it. The Ministry for Primary Industries (MPI) and Federated Farmers have restarted the service to help farmers facing pressure on stock feed. To offer or request feed or grazing, freephone 0800 FARMING (0800 32 76 46) or visit www.fedfarmers.org.nz.

*Farmers in Hawke's Bay and Tairāwhiti faced with obstacles transporting livestock to meat processing plants and saleyards, can contact the MPI Livestock coordinator for support/advice. Contact Leonie Ward: ph 029 8940752, email leonie.ward@mpi.govt.nz.

*MPI's On Farm Support (OFS) team provides on-the-ground assistance for farmers and growers across New Zealand. The service connects farmers and growers with extension services, funding and advice that will help in the transition to more sustainable practices and in the planning for climate change and adverse weather events. To access the service phone 0800 707 133 or email onfarmsupport@mpi.govt.nz



The East Coast Rural Support Trust is a charitable trust that works with the rural community when times are tough on the farm or for your family. We also assist during and after adverse events.

We have local, rural people who know from experience that pressures can mount up, our networks and training can help with all kinds of situations and can help you get through your current challenges from Health and wellbeing, financial and adverse events. Our service is free and confidential.

Kylie Brown is our Wairoa Facilitator.

For assistance contact:
0800 787 254
www.rural-support.org.nz
Rural Support Trust
Wairoa on Facebook.

HB DISASTER RELIEF FUND

The Hawke's Bay Disaster Relief Trust has funding eligibility to \$10,000. Phase 2 allows previous applicants to reapply for additional support where they have been severely impacted.

The fund is open to individuals and community groups to cover larger costs incurred because of flooding such as cleaning, clearing, and potential rebuilding of properties impacted by Cyclone Gabrielle.

The Trust is also making larger bulk donations to Wairoa District Council, of \$2,000 for every stickered property within our region. WDC will allocate these funds based on their contact lists to support these affected properties.

Application forms are available on the HBRC website or call into the WYAT office for help with your application.

CLAIMS RESOLUTION SERVICE

If you need support with an insurance claim, the New Zealand Claims Resolution Service can help you access the services you need to resolve it. They provide free advice, case management where appropriate and access to legal, engineering and wellbeing support, tailored to individual's needs.

Visit nzcrs.govt.nz for more information.

HAWKE'S BAY JOINING UP ON CLIMATE ACTION

For the first time, Hawke's Bay will have a coordinated approach for decision making in climate action with the establishment of a joint council and tangata whenua Climate Action Joint Committee. The aim of the committee, made up of the region's five councils, Post-Settlement Government Entities and Taiwhenua representatives is to build climate resilience in the region and cut carbon emissions in line with the regional goal to be carbon neutral by 2050.

Committee Chair Hinewai Ormsby says with the work done to establish the first emissions profile of Hawke's Bay last year, the committee is a great step towards a co-ordinated regional effort to achieve decarbonisation goals.

"Our communities are asking us to build back smarter. This isn't just about where we build, it's about what we build and how we build to ensure those buildings are energy efficient and really meet our community's need for a long time into the future."



WAIROA RECOVERY

TE WAIROA KA ORA TE WERO TE TAKI
STRENGTH x UNITY x RESILIENCE

FOR INFORMATION AND HELP RELATING TO CYCLONE GABRIELLE PLEASE CONTACT US

- Online form via WDC website www.wairoadc.govt.nz/contact-us/customer-service-request/
- Phone 06 838 7309
- Email recovery@wairoadc.govt.nz
- In-person at the Recovery Team Office at the Wairoa Airport (end of Airport Road). Our open hours are Monday to Friday 10am-2pm.



WAIROA RECOVERY

You can also pop into the WYAT office on Marine Parade for support and funding assistance with: Mayoral Relief Funding, HBRC Disaster Funding (residential), Pātaka forms, Red Cross Funding

Disclaimer: The Wairoa Recovery team has made every effort to ensure the information contained in this newsletter is as up-to-date and accurate as possible. We acknowledge this is a rapidly changing environment and the information provided should be used for general purposes only. We encourage people to seek additional information before making any business, legal or other decisions. If you have any queries, please don't hesitate to contact us at recovery@wairoadc.govt.nz.