



**FREEDOM CAMPING**

**WAIROA**

**HAWKE'S BAY | NEW ZEALAND**

# CONTENTS

<b>Things you need to know</b>	<b>1</b>
Freedom Camping Locations	1
Dump Stations	1
Liquor Ban	2
Dogs	2
Open Fires	2
<b>Types of Freedom Campig</b>	<b>3</b>
<b>Tsunami Risk</b>	<b>4</b>
<b>Freedom Camping Wardens</b>	<b>4</b>
<b>Safety for Travelers</b>	<b>5</b>
<b>Camping Map</b>	<b>6</b>
<b>Restricted Areas</b>	<b>8</b>
Self-contained camping	8
All types of camping	10
<b>DoC Campgrounds</b>	<b>11</b>
<b>Campgrounds &amp; Holiday Parks</b>	<b>12</b>
<b>Prohibited Areas</b>	<b>14</b>
Tuai	16
Wairoa	16
Mahia	18
<b>Practical Information</b>	<b>24</b>
Supermarket & Dairies	24
Camping Equipment	25
Laundromats	26
Rubbish & Recycling	26
Service Stations	26
Garages & Mechanics	27
Health Services	29
Emergencies	29
Banks, ATM's & Post Shops	29
Liquor Stores	30
Restaurants & Takeaways	30
Pubs	32
Clubs	33
Activities	33
Sports & Relaxation	36
Swimming, Diving & Surfing	36
Entertainment	37
Events	37
<b>History</b>	<b>40</b>
<b>Maps</b>	<b>41</b>

# THINGS YOU NEED TO KNOW

*The Wairoa District is a beautiful part of Hawke's Bay and the East Coast - the perfect place to visit for responsible campers. Enjoy our spectacular outdoor environments with Te Urewera, Lake Waikaremoana and Mahia Peninsula right on our doorstep. We have amazing beaches, rivers, hills, lakes, waterfalls and much more. Here's how you can help to maintain the districts natural environment during your stay.*

- Use public toilets available in the area
- Use local laundry facilities to wash your clothes
- Enjoy local facilities for bathing
- Dump your rubbish only at designated areas (e.g. Wairoa landfill)
- Ensure your black water (sewage) and grey water (shower, sink and hand basin water) holding tanks are discharged at designated wastewater dump stations

We also encourage campers to make use of designated commercial camping grounds and DOC campsites.

## FREEDOM CAMPING LOCATIONS

Freedom camping is permitted in any local authority area within the District unless it is restricted or prohibited.

We care for our district, and appreciate your support in this by complying with the conditions set out in relation to each site.

Persons found camping on prohibited land will be issued with an infringement notice.

## DUMP STATIONS

Please note some charges apply for dumping:

- Riverside Motorcamp, 19 Marine Parade, Wairoa: \$5 per casual dump or FREE (included in camping fee) if staying onsite
- War Memorial Park, Freyberg Street, Wairoa: FREE (no charge)
- Waikaremoana Holiday Park, SH38, Waikaremoana: FREE (no charge)

## LIQUOR BAN

Please note a liquor ban applies as follows:

**Wairoa** (24 hours per day 365 days of the year) bounded by:

- Marine Parade from Murrae Street to King Street
- Queen Street from Murrae Street to King Street
- Riverbank from Murrae Street to King Street and all associated alleyways and car parks

**Mahia** (24 hours a day from December 20th to January 20th every year):

- The whole of the Mahia Peninsula and surrounding area encompassed within the coastline from Nuhaka to Paritu.

## DOGS

Dogs are permitted within the freedom camping areas as long as they are tied up or on a leash at all times.

## OPEN FIRES

Camping is a Kiwi tradition and campfires are a big part of enjoying the outdoors.

### Check the Fire Season

There are rules and restrictions for campfires. You must check the fire season and rules before you light a fire.

### Fire Emergency New Zealand

🌐 [www.firepermit.nz](http://www.firepermit.nz)

### Before you light a fire

- Check the fire season
- Check rules and for any signs about campfires
- Check weather and wind speed and direction. Only light your fire when there is little or no wind forecast.
- Avoid areas near your tent, structures, vehicles, shrubs and trees, clear combustible fuel including to at least three metres on all sides, and circle your campfire site with rocks.
- Keep your campfire small.
- Have some way to put out any unplanned fires.

### When your fire is lit

- Only burn clean, dry untreated wood. Never burn rubbish.
- Never leave a campfire unattended.
- If a change in the wind direction or speed makes your fire unsafe — put it out.

### After your fire

- Use plenty of water to extinguish all the embers of

your campfire. If your camp is not near a water source, use dirt to extinguish the embers and mix until cool.

- Don't bury your fire as it could continue to smoulder and reignite.

**Dial 111 immediately in an emergency. Anything that could cause loss of life, serious injury or loss of property is a fire emergency.**

## TYPES OF FREEDOM CAMPING



### ALLOWED - SELF-CONTAINED CAMPING

Motorhomes with built-in kitchen, bathroom, fresh water tank and holding tanks for black and grey water.

Permitted for up to three days in any area owned by the local authority within the district unless it is prohibited.



### RESTRICTED - NON SELF-CONTAINED CAMPING

Modified car, van or vehicle without some or all of the facilities needed for day to day living or sleeping in a tent with no day to day amenities.

Non self-contained camping is only allowed in restricted areas.

So if you are travelling in a vehicle that is not a certified fully self-contained vehicle or sleeping in a tent, you are only allowed to camp in restricted areas which are marked with green signs.



### PROHIBITED

Neither self-contained nor non self-contained camping is allowed in this area.



# TSUNAMI RISK

A tsunami is a series of fast traveling waves. These are caused by large disturbances on the ocean floor, such as earthquakes, landslides or volcanic eruptions.

## What warning will there be?

Sometimes natural warnings, like any of those below, will be the only warning of a tsunami, so don't wait for an official warning, go immediately to high ground or, if the surrounding area is flat, go as far inland as possible, evacuating all coastal evacuation zones, if there is:

- Strong earthquake shaking, making it hard to stand up or walk steadily, and there's significant household contents damage and building damage
- Weak, rolling earthquake shaking which is unusually long, a minute or more
- Unusual sea behaviour, such a sudden sea level fall or rise, or the sea making loud and unusual noises, especially roaring like a jet engine.

# FREEDOM CAMPING WARDENS

The Wairoa District Council has partnered with local iwi organisations, Rongomaiwahine Iwi Trust and Mahia Māori Committee, to develop and implement a Freedom Camping Ambassador initiative.

This initiative will be particularly focused on the Mahia Peninsula and Wairoa township, which are the most popular areas for freedom camping in the Wairoa district.

Ambassadors will monitor campsites, rubbish, recycling and toilet facilities. Primarily their role is to have an education and visitor experience focus and will positively engage with freedom campers and visitors to encourage them to camp in the right locations and to vacate areas which are restricted or prohibited.

This initiative will be delivered during the peak season of October 2019 to April 2020.

If you are found camping in a prohibited area and are asked to move on to a freedom camping area, please comply.

People found camping on prohibited land can be issued with an infringement notice of up to \$200.

# SAFETY FOR TRAVELERS

You are travelling and you need to find a toilet where do you go? In New Zealand you can expect to find toilets at:

- Information and visitor centres
- National park headquarters
- Petrol stations
- Hotels
- Public libraries
- Camp grounds
- Rail and bus stations
- Urban parks and childrens playgrounds.

Use the toilets in towns as they may not be available in the countryside.

At remote locations where there are no toilets, bury your waste.

- Select a secluded spot well away from water, walking tracks, huts and potential campsites.
- Dig or scrape a shallow hole and refill with loose soil.
- Waste will degrade fastest in loose topsoil where humus is actively decomposing.

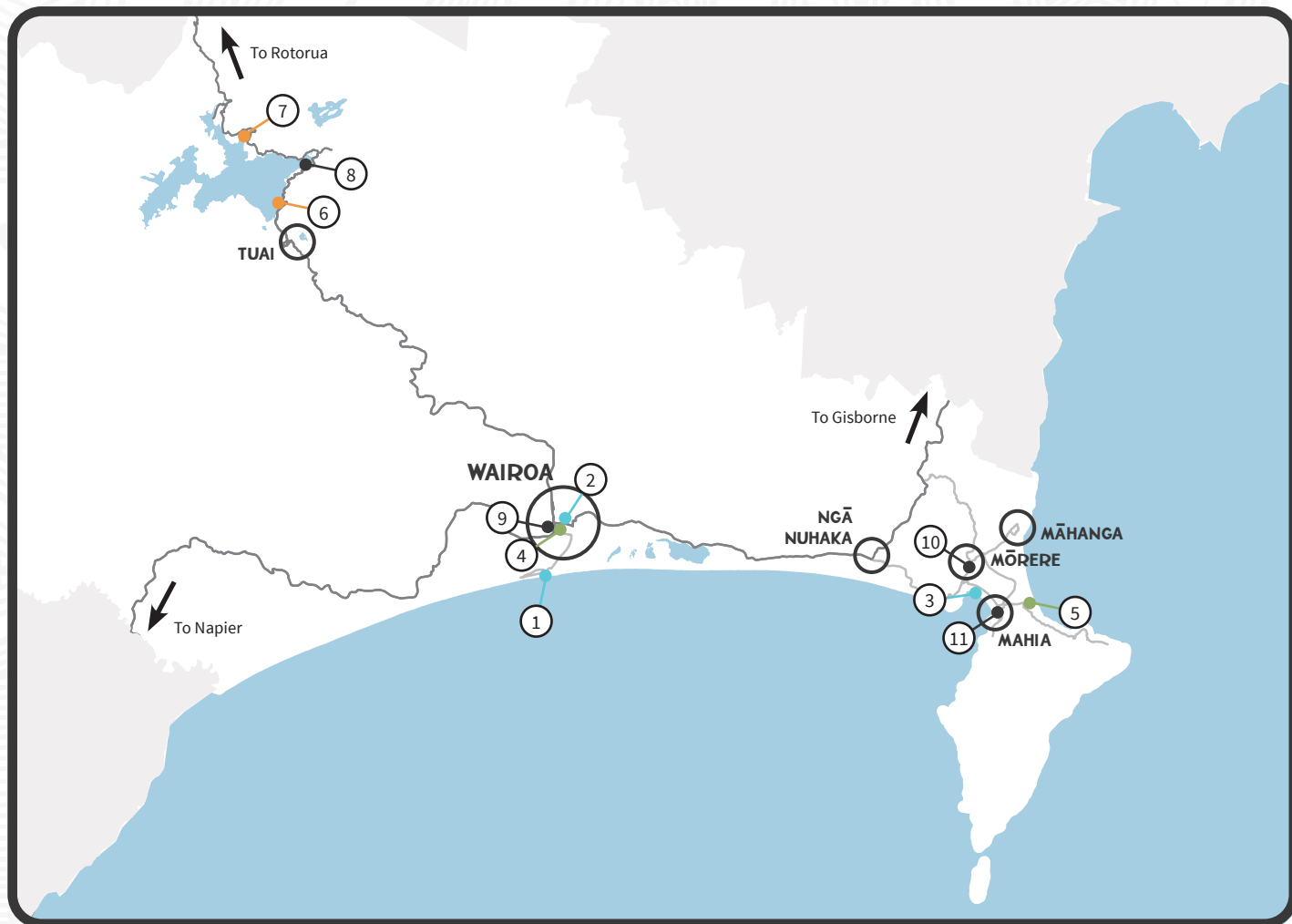
Campervan, Caravan and motor caravan users

- Use public toilets rather than fill up your holding tank
- Before setting out on your trip identify the location of sewage dump points e.g. camping grounds

The procedure for dumping is simple and clean. If your vehicle has a holding tank it will have a flexible hose with a snap coupling to fit the dump point facility. In the event of a spillage a hose at the dump facility may be used to wash it away. Portable toilets may also be emptied into dump points with care.



# CAMPING MAP



Some areas in the Wairoa District allow all types of camping (self-contained and non self-contained), other areas only allow self contained camping.

Please refer to the map above and the corresponding maps on the following pages for the exact location of the camping areas.

- 1 - 3** Self-contained camping only
- 4 - 5** All types of camping
- 6 - 7** DOC Campgrounds
- 8 - 11** Campgrounds & Holiday Parks

# RESTRICTED AREAS

Self-contained camping only



## WAIROA | RESTRICTED AREAS



### 1 | PILOT HILL

Only fully **SELF-CONTAINED** camping is **PERMITTED** in the area marked **BLUE**. Camping is prohibited outside the area marked blue.



### 2 | WAR MEMORIAL PARK

Only fully **SELF-CONTAINED** camping is **PERMITTED** in the area marked **BLUE**. Camping is prohibited outside the area marked blue.

## MAHIA | RESTRICTED AREAS



### 3 | ORMOND DRIVE

Only fully **SELF-CONTAINED** camping is **PERMITTED** in the area marked **BLUE**. Camping is prohibited outside the area marked blue.



### 3 | ORMOND DRIVE

Only fully **SELF-CONTAINED** camping is **PERMITTED** in the area marked **BLUE**. Camping is prohibited outside the area marked blue.



### 3 | ORMOND DRIVE

Only fully **SELF-CONTAINED** camping is **PERMITTED** in the area marked **BLUE**. Camping is prohibited outside the area marked blue.

# RESTRICTED AREAS

All types of camping



## WAIROA | RESTRICTED AREAS



### 4 | CLYDE COURT

**SELF-CONTAINED** and **NON SELF-CONTAINED** camping is **PERMITTED** in the area marked **GREEN**.

## MAHIA | RESTRICTED AREAS



### 5 | ORAKA RESERVE

**SELF-CONTAINED** and **NON SELF-CONTAINED** camping is **PERMITTED** in the area marked **GREEN**.

# DOC CAMPGROUNDS

All types of camping



## WAIKAREMOANA RESTRICTED AREAS



### 6 | ROSIE BAY

Basic Campsite offering 6 non-powered sites. Booking's not required - first come, first served.

📍 SH38, 10kms south of Lake Waikaremoana Holiday park.



### 7 | MOKAU LANDING

Standard campsite offering 40 non-powered sites. Booking's not required - first come, first served.

📍 Drive west around the lake approx. 10kms from SH38 at Aniwhaniwa.

For more information about Department of Conservation campsites:

🌐 [www.doc.govt.nz](http://www.doc.govt.nz)



# CAMPGROUNDS & HOLIDAY PARKS

All types of camping



## WAIKAREMOANA



### 8 | WAIKAREMOANA HOLIDAY PARK

📍 6249 Lake Road (SH38), Te Urewera 4195

☎ +64 6 837 3826

🌐 [www.waikaremoana.info](http://www.waikaremoana.info)

## WAIROA



### 9 | WAIROA RIVERSIDE MOTOR CAMP

📍 19 Marine Parade, Wairoa 4108

☎ +64 6 838 6301

🌐 [www.riversidemotorcamp.co.nz](http://www.riversidemotorcamp.co.nz)

## MŌRERE



### 10 | MŌRERE HOLIDAY PARK

📍 3983 -3987 State Highway 2, Mōrere 4078

☎ +64 6 837 8792

🌐 [www.morerelodge.co.nz](http://www.morerelodge.co.nz)

## MAHIA



### 11 | MAHIA BEACH HOLIDAY PARK

📍 43 Moana Dr, Mahia

☎ +64 6 837 5830

🌐 [www.mahiaholidaypark.nz](http://www.mahiaholidaypark.nz)

★ For more information about accommodation options in the Wairoa District, please visit the Wairoa i-SITE.



#### Wairoa i-SITE

📍 Cnr SH2 & Queen Street, Wairoa

🌐 [www.visitwairoa.co.nz](http://www.visitwairoa.co.nz)

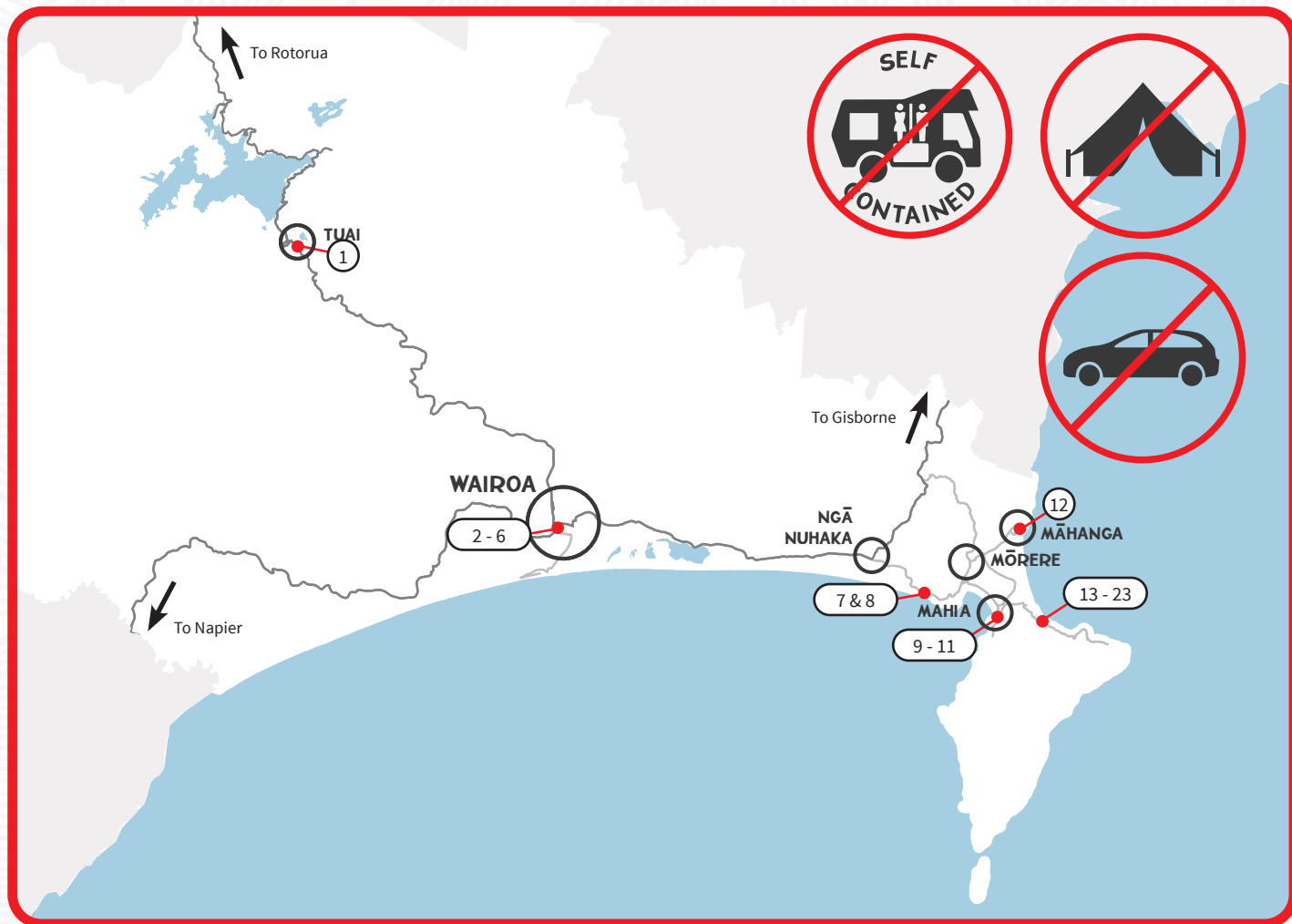
✉ [isitewairoa@wairoadc.govt.nz](mailto:isitewairoa@wairoadc.govt.nz)

☎ 0800 WAIROA (924 762)

☎ +64 6 838 7440



# PROHIBITED AREAS



Any kind of camping, be it in a self-contained or non self-contained vehicle or in a tent is prohibited in these areas. If found camping in a prohibited area, an infringement notice will be served.

Please refer to the map above and the corresponding maps on the following pages for the exact location of the prohibited areas.

- |                  |                                   |
|------------------|-----------------------------------|
| <b>1</b>         | Tuai                              |
| <b>2 - 6</b>     | Wairoa                            |
| <b>7 &amp; 8</b> | Nuhaka-Opoutama Road/Blacks Beach |
| <b>9 - 11</b>    | Mahia                             |
| <b>12</b>        | Māhanga                           |
| <b>13 - 23</b>   | Mahia East Coast Road             |

# PROHIBITED AREAS

**NO CAMPING** in the areas marked **RED**.



## TUAI | PROHIBITED AREAS



### 1 | TUAI ESPLANADE RESERVE (WHAKAMARINO LODGE AREA)

This area is a safe play space for children and area or day trippers.

## WAIROA | PROHIBITED AREAS



### 2 | OLD WHAKAMAUI ROAD

To allow for the continued and extended use for recreational users of the reserve and day trippers.



### 3 | CLYDE COURT (TOILETS LAWN AREA)

This part of the site is a commercial area used for markets and is not appropriate for camping.



### 4 | ALEXANDRA PARK (SKI CLUB TO PLAYGROUND)

This area is used for community events and as a safe play space for children.



### 5 | LIGHTHOUSE RESERVE

This area is a safe play space for children. Access to this site from road reserve is topographically difficult and could result in damage to vehicles & the reserve.





## 6 | ESPLANADE RESERVE

Access to the identified areas of this reserve is blocked by other prohibited sites. The proximity of the reserve to the river makes the ground soft, camping on such ground may damage vehicles and the reserve.



## 9 | ORMOND DRIVE

This area may from time to time be used for the landing of rescue helicopters, and as such must be kept clear at all times.

# MAHIA | PROHIBITED AREAS



## 7 | BLACKS BEACH

The area in red needs to be kept clear for the use of recreational users of the reserve, as well as for road safety reasons.



## 10 | MOKOTAHİ

This area is reserved for boat launching and retrieval, parking, turning of long vehicles, recreational use and as a safe play space for children.



## 8 | OPOUTAMA LOOKOUT

The area in red needs to be kept clear for the use of recreational users of the reserve, as well as for road safety reasons.



## 11 | TAYLORS BAY

This area must be kept clear to allow for the continued and extended use for recreational users of the reserve and day trippers.



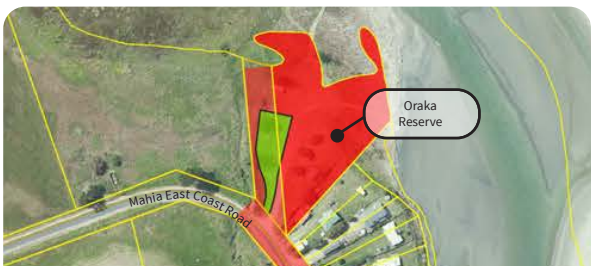
## 12 | MĀHANGA

This area should be kept clear to allow for parking of boat trailers and turning of long vehicles, and for recreational users of the reserve.



## 15 | KAIUKU ESPLANADE RESERVE

This area must be kept clear to allow for people to access waahi kai areas and for recreational users of the reserve and as a safe play space for children.



## 13 | ORAKA RESESRVE

The area as identified in red must be kept clear to allow for people to access waahi kai areas and for recreational users of the reserve and as a safe play space for children.



## 16 | ESPLANADE RESERVE

This land contains Urupa (burials) and it is considered inappropriate to allow camping in such sensitive areas.



## 14 | ORAKA ROAD

This area must be kept clear to allow for people to access waahi kai areas and for recreational users of the reserve.



## 17 | WHANGAWEHI URUPA

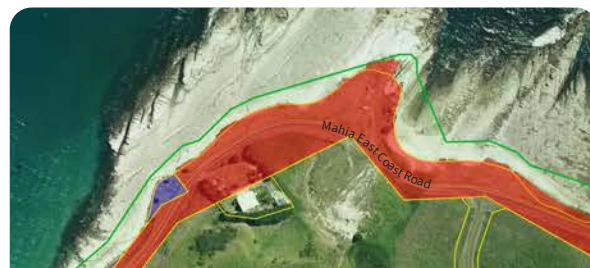
This land contains Urupa (burials) and it is considered inappropriate to allow camping in such sensitive areas.





### 18 | WHANGAWEHI RESERVE

This area should be kept clear to allow boats to be launched and retrieved, for the parking of trailers and for turning of long vehicles.



### 21 | SNAPPER ROCK

This area must be kept clear to allow for people to access waahi kai areas and for recreational users of the reserve and as a safe play space for children.



### 19 | WHANGAWEHI CORONATION RESERVE

This area must be kept clear to allow for people to access waahi kai areas and for recreational users of the reserve and as a safe play space for children.



### 23 | NUKUTAUURUA ROAD

This area has been identified as historically sensitive being the location of previous battles, containing places for the preparation of the dead for burial.



### 20 | AUROA POINT/THE CRUSHER

This area must be kept clear to allow for people to access waahi kai areas and for recreational users of the reserve and as a safe play space for children.

★ For information about freedom camping you can also visit the Wairoa District Council and Wairoa i-SITE websites.



**Wairoa District Council**  
 www.wairoadc.govt.nz,  
 search for #freedomcamping



**Wairoa i-SITE**  
 www.visitwairoa.co.nz



# PRACTICAL INFORMATION

## SUPERMARKET & DAIRIES

### WAIROA

#### New World

📍 41 Queen St, Wairoa 4108

☎ +64 6 838 8019

🕒 Mon - Sun 7am - 7pm

#### Clyde Road Dairy

📍 60 Clyde Road, Wairoa

#### Mahia Ave Dairy

📍 24 Mahia Ave, Wairoa

☎ +64 6 838 8327

🕒 Mon - Fri 5am - 7.30pm, Sat 6am - 7.30pm,  
Sun 7am - 7pm

#### McLean Street

📍 84 McLean Street, Wairoa

☎ +64 6 835 7437

🕒 Mon - Fri 6.30am - 9pm, Sat 7am - 9pm,  
Sun 7.30am - 9pm

#### Richie's Supermarket

📍 110 Marine Parade, Wairoa

☎ +64 6 838 8660

🕒 Mon - Fri 7.15am - 9pm, Sat & Sun 8.15am - 9pm

#### Riverview Dairy

📍 266 Marine Parade, Wairoa

☎ +64 6 838 6500

🕒 Mon - Fri 7am - 6.30pm, Sat & Sun 8am - 6pm

#### Robbies

📍 22 Kitchener Street, Wairoa

☎ +64 6 838 8685

🕒 Mon - Fri 7.30am - 7pm, Sat 10am - 6pm  
Sun 11am - 6pm

#### Zeny's Dairy/Ethnic Food

📍 152 Marine Parade

☎ +64 6 281 5088

🕒 Mon-Sat 7am - 6pm

### FRASERTOWN

#### CJ's Dairy Frasertown

📍 721 Sutton Street Frasertown

☎ +64 6 838 6464

🕒 Mon - Fri 5.30am - 6pm, Sat & Sun 9am - 5pm

### WAIKAREMOANA

#### Waikaremoana Holiday Park

📍 6249 Lake Road (SH38), Te Urewera 4195

☎ +64 6 837 3826

🕒 Mon - Sun 8am - 6pm

### MAHIA

#### Mahia Beach Store

📍 Newcastle Street, Mahia

☎ +64 6 837 5890

🕒 Mon - Sat 7am - 6.30pm (7pm Labour weekend to Easter)  
Sun 7am - 6pm (6.30pm Labour weekend to Easter)  
Boxing Day - 7th Jan 7am - 7.30pm

#### Mahia Service Centre

📍 1484 Nuhaka Opoutama Rd, Mahia 4198

☎ +64 6 837 5864

🕒 Mon - Sun 7am - 6pm

### NUHAKA

#### Nuhaka General Store

📍 SH2 Nuhaka

☎ +64 6 837 8717

★ **Stock up on supplies while you are in Wairoa before making your trip to Lake Waikaremoana as there are no supermarkets in that area.**

## CAMPING EQUIPMENT

### WAIROA

#### Angus Gemmell Ltd

📍 176 Marine Parade

☎ +64 6 838 7577

🕒 Mon - Fri 8am - 5pm

#### Estway Sport

📍 200 Marine Parade

☎ +64 6 838 8677

🕒 Mon - Fri 9am - 5pm, Sat 9am - 12pm

### Farmlands

📍 53 Bridge St

☎ +64 6 838 7209

🕒 Mon - Fri 8am - 5pm, Sat 9am - 12pm

### Johansen Hammer Hardware

📍 90 Marine Parade

☎ +64 6 838 7069

🕒 Mon - Fri 8.30am - 5pm, Sat 9am - 5pm,  
Sun 10am - 3pm

## LAUNDROMATS

### WAIROA

#### Kea Hire Laundromat

📍 23 Locke St

☎ +64 6 838 6548

🕒 Mon - Fri 8am - 5pm, Sat 8am - 12pm

#### Richie's Laundromat

📍 108 Marine Parade

☎ +64 6 838 8550

🕒 Mon - Sun 4am - 9pm

#### Wairoa Laundromat

📍 5 Paul Street

## RUBBISH & RECYCLING

### WAIROA

#### Wairoa Landfill & Recycling Centre

📍 Fraser Street, Wairoa

☎ +64 6 838 8456, +64 27 7009 051

🕒 Tue, Thur, Sat, Sun 8am - 2pm  
(closed some public holidays)

EFTPOS available

## SERVICE STATIONS

### WAIROA

#### Caltex Wairoa Truck Stop

📍 Cnr Mahia Ave & Carrol St  
Self-service

### g.a.s. Wairoa

📍 Crn Paul & Lucknow St

☎ +64 6 838 3042

🕒 Mon - Fri 5am - 8pm, Sat 6am - 8pm, Sun 7am - 8pm

### Mobil

📍 7-13 Bridge St

☎ +64 6 838 7681

🕒 Open 24 Hours

### Z Wairoa

📍 1 Achilles Street, Wairoa 4108

☎ +64 6 838 7768

🕒 Open 24 Hours

### WAIKAREMOANA

#### Waikaremoana Holiday Park

📍 6249 Lake Road (SH38), Te Urewera 4195

☎ +64 6 837 3826

🕒 Mon - Sun 8am - 6pm

### MAHIA

#### Mahia Service Centre

📍 1484 Nuhaka Opoutama Rd, Mahia 4198

☎ +64 6 837 5864

🕒 Pay at pump 24 Hours, 7 days

★ **Make sure to fuel your vehicle up when you are travelling SH38 from Wairoa to Rotorua. There are no service stations between Waikaremoana and Murupara.**

## GARAGES & MECHANICS

### WAIROA

#### 24 HOUR SERVICE

#### North Clyde Panel and Paint

📍 Cnr Carroll Street & Somerville St

☎ +64 6 838 7736 (24 hours)

🕒 Mon - Fri 8.30am - 5pm

### **The Tyre Genral**

📍 3 Achilles Street

☎ +64 6 838 3054 (24 hours)

🕒 Mon - Fri 7.30am - 5pm, Sat 9am - 12pm,  
Not open stat holidays

### **Wairoa Autobodies**

📍 36 Lucknow Street

☎ +64 6 838 7397

☎ +64 6 838 7391 (24 hours)

🕒 Mon - Fri 7.30am - 4.30pm

### **Bridgestone Tyres**

📍 Paul Street

☎ +64 6 838 7027

🕒 Mon - Fri 8am - 5pm, Sat 9am - 12pm

### **Chris Joblin Motors**

📍 54 Queen Street

☎ +64 6 838 9005

🕒 Mon - Fri 8am - 5pm

### **Crossroads**

📍 11 Paul Street

☎ +64 6 838 8209

🕒 Mon - Fri 8am - 5pm

### **Muuzzr's Motors**

📍 54 Freyburg Street

☎ +64 6 838 6329

🕒 Mon - Fri 8am - 4.30pm

### **Wairoa Motorcycles**

📍 Cnr Carroll St & Mahia Ave

☎ +64 6 838 6922

🕒 Mon - Fri 7.30am - 5.30pm, Sat 9am - 12pm

## **MAHIA**

### **Mahia Service Centre**

📍 1484 Nuhaka Opoutama Rd, Mahia 4198

☎ +64 6 837 5864

🕒 Mon - Sun 7am - 6pm

## **HEALTH SERVICES**

### **WAIROA**

#### **Dentiq Dental - Wairoa**

📍 8 Locke Street

☎ +64 6 838 7144

🕒 Mon - Fri 8.30am - 5pm

#### **Queen Street Practice**

📍 36 Kitchener Street (Wairoa Hospital)

☎ +64 6 838 8333

🕒 Mon - Fri 8.30am - 5pm

#### **Wairoa Hospital**

📍 36 Kitchener Street

☎ +64 6 838 7099

#### **Wairoa Pharmacy**

📍 Cnr Paul & Queen Street

☎ +64 6 838 7408

🕒 Mon - Fri 9am - 5pm, Sat 9am - 12pm

## **EMERGENCIES**

★ **For any kind of emergency please dial 111**

#### **Wairoa Police Station**

📍 72 Queen Street, Wairoa 4108

☎ +64 6 838 8345

## **BANKS, ATM'S & POST SHOPS**

### **WAIROA**

#### **Baywide Credit Union**

📍 56 Queen Street

☎ +64 6 838 9050

🕒 Mon, Wed & Fri 9am - 4.30pm, Tue 9.30am - 4.30pm,  
Thur 9am - 5pm

#### **BNZ**

📍 198 Marine Parade

☎ 0800 275 269

🕒 Mon - Fri 9am - 4.30pm



### **Wairoa Post Shop and Kiwibank**

📍 92 Marine Parade

☎ +64 6 838 5184

🕒 Mon 9am - 5pm, Tue - Fri 8.30am - 5pm,  
Sat 9am - 12pm

### **Westpac**

📍 86 Marine Parade

☎ +64 6 838 3141

🕒 Mon - Fri 9am - 4.30pm

## **MAHIA**

### **Mahia Beach Store (ATM only)**

📍 Newcastle Street, Mahia

☎ +64 6 837 5890

🕒 Mon - Sun 7.30am - 7pm (6pm in Winter)  
(7am - 8.30pm during holidays)

★ **There are no banks or ATM's in rural areas outside the townships of Wairoa and Mahia. Please make sure you get cash out while you are in Wairoa.**

## **LIQUOR STORES**

### **WAIROA**

#### **Bottle-O Wairoa**

📍 Queen Street, next to New World

☎ +64 6 838 3399

🕒 Mon - Thur 8.30am - 6.30pm, Fri 8.30am - 7pm,  
Sat 9am - 6.30pm

#### **Wairoa Wine & Spirits**

📍 Cnr Paul Street & Lucknow Street

☎ +64 6 838 7742

🕒 Mon - Tue 9am - 6pm, Wed - Sat 9am - 7pm,  
Sun 10am - 5pm

## **RESTAURANTS & TAKEAWAYS**

### **WAIROA**

#### **2ate7**

📍 287 SH2 Wairoa

☎ +64 6 838 6601

🕒 7 Days 7.30am - 4pm

### **Eastend Cafe**

📍 250 Marine Parade

☎ +64 6 838 6070

🕒 Tue - Fri 7am - 4pm  
Saturday 8am - 3pm (*winter*)/4pm (*summer*)  
Sunday 9am - 3pm (*winter*)/4pm (*summer*)

### **Ferry Hotel**

📍 9 Carroll Street

☎ +64 06 838 8229

🕒 7 Days open for breakfast, lunch & dinner

### **Vista Motor Lodge & Restaurant**

📍 2 Bridge Street

☎ +64 6 838 8279

🕒 Mon - Fri 6pm - late

### **Wairoa Club - Restaurant**

📍 Cnr Marine Parade & Paul Street

☎ +64 6 838 7414

🕒 Wed - Sat 5pm - 8.30pm

Bar can be accessed by affiliated members only.

## **FRASERTOWN**

### **Frasertown Tavern**

📍 736 Sutton Street

☎ +64 6 838 6801

🕒 Mon - Wed & Sat - Sun 1pm - late, Thur - Fri 1pm - 2am

## **MAHIA**

### **Rocket Cafe**

📍 476 Mahia East Coast Rd

☎ +64 6 837 5094

🕒 Mon - Sun 9.30am - 4pm (December to April)

### **The Beach Cafe**

📍 43 Moana Drive

☎ +64 6 837 5948

🕒 Mon - Sun 9am - 9pm (Sept - Feb)  
Mon - Fri 4pm - 9pm (Feb - Sept)  
Sat & Sun 9am - 9pm (Feb - Sept)

## MŌRERE

### Smokey Bros BBQ

📍 3983 SH 2, Morere 4078

☎ +64 6 837 8792

🕒 Mon - Sun 10am - 7pm

★ Also choose from one of the many TAKEAWAY options in Wairoa, Nuhaka, Mōrere or Mahia.

## PUBS

### WAIROA

#### Clyde Hotel

📍 Queen Street

☎ +64 6 838 7139

🕒 Mon - Sun 10am - 2am

#### Bottle Store

🕒 Mon - Sun 10am - 11pm

#### Ferry Hotel

📍 9 Carroll Street

☎ +64 6 838 8229

🕒 Mon - Thurs 11am - 12am, Fri - Sun 11am - 2am

#### Wairoa Club - Restaurant

📍 Cnr Marine Parade & Paul Street

☎ +64 6 838 7414

🕒 Mon & Tue 11am - 7pm, Wed & Sun 11am - 8pm,  
Thur - Sat 11am - 11pm

Bar can be accessed by affiliated members only.

### FRASERTOWN

#### Frasertown Tavern

📍 736 Sutton Street Frasertown

☎ +64 6 838 6801

🕒 Mon - Wed & Sat - Sun 1pm - late, Thur - Fri 1pm - 2am

### MAHIA

#### Sunset Point

📍 Cnr Newcastle & Ratau Street

☎ +64 6 837 5071

🕒 Mon - Sun 11am - late (Dec - Easter)

## CLUBS

### FISHING CLUBS

#### Mahia Boating & Fishing Club

☎ +64 21 860 408, Jarred Moroney

#### Wairoa Fishing Club

☎ +64 6 838 7414, Quintin Baty

#### Wairoa & District Angling Club

Enquiries ☎ +64 6 838 5104

Cabin and Boat bookings ☎ +64 6 838 8677

### GOLF CLUBS

#### Mahia Golf Club

📍 293 Ormond Dr, Mahia

☎ +64 6 838 5700

#### Wairoa Golf Club

📍 Frasertown Rd, Wairoa

☎ +64 6 838 6437

### WAIROA RACING CLUB

☎ +64 6 838 3999, Paul Toothill

### WAIROA ROD & GUN CLUB

☎ +64 6 837 5554

### WATERSPORTS

#### Adventure Wairoa

☎ +64 6 838 8740, Russell McCracken

🌐 [www.sporty.co.nz/adventurewairoa](http://www.sporty.co.nz/adventurewairoa)

#### Water Skiing Club

☎ +64 27 49 95 058, Cam MacGilivray

#### Yachting

☎ +64 6 838 7761, Adrian Mayhead

## ACTIVITIES

### FISHING & EQUIPMENT

Licences for fresh water fishing can be purchased at the Wairoa i-SITE or online, or go surf-casting on one of our beautiful beaches.

## WAIROA

### Estway Sport

📍 200 Marine Parade, Wairoa

☎ +64 6 838 8677

🕒 Mon - Fri 9am - 5pm, Sat 9am - 12pm

### g.a.s. Wairoa

📍 Crn Paul & Lucknow St, Wairoa

☎ +64 6 838 3042

🕒 Mon - Fri 5am - 8pm, Sat 6am - 8pm, Sun 7am - 8pm

### Johansen Hammer Hardware

📍 90 Marine Parade, Wairoa

☎ +64 6 838 7069

🕒 Mon - Fri 8.30am - 5pm, Sat 9am - 5pm, Sun 10am - 3pm

### Mahia Ave Dairy

📍 24 Mahia Ave, Wairoa

☎ +64 6 838 8327

🕒 Mon - Fri 5am - 7.30pm, Sat 6am - 7.30pm,  
Sun 7am - 7pm

### Mobil

📍 7-13 Bridge St, Wairoa

☎ +64 6 838 7681

🕒 Open 24 Hours

### Wairoa Motorcycles

📍 Cnr Carroll St & Mahia Ave, Wairoa

☎ +64 6 838 6922

🕒 Mon - Fri 7.30am - 5.30pm, Sat 9am - 12pm

## MAHIA

### Mahia Beach Store

📍 Newcastle Street, Mahia

☎ +64 6 837 5890

🕒 Mon - Sun 7.30am - 7pm (6pm in Winter)  
(7am - 8.30pm during holidays)

### Mahia Service Centre

📍 1484 Nuhaka Opoutama Rd, Mahia 4198

☎ +64 6 837 5864

🕒 Mon - Sun 7am - 6pm

★ **You can buy BAIT & ICE at local service stations, Estway Sport, Wairoa Motorcycles & Mahia Ave Dairy.**

## MARKETS

### WAIROA

#### Riverside Market

📍 Playground (by the Community Centre off Marine pde)

🕒 Every Saturday, 8.30am - 12pm (October to April)

### MAHIA

#### Mahia Seaside Market

📍 Pohutukawa Reserve, Mahia

🕒 Every Sunday 9am - 12pm (Christmas to 2nd week of February - this market is weather dependent)

## OUTDOOR ADVENTURES

### OUT ON A LIM

📍 109 Iwitea Road, RD6, Wairoa

☎ +64 21 143 3126

☎ +64 6 837 5883

🌐 [www.outonalim-iwitea.weebly.com](http://www.outonalim-iwitea.weebly.com)

### WATERFALLS

#### Āniwaniwa Falls

20 min walk from corner Aniwaniwa Road and SH38.

#### Papakorito Falls

Spectacular 20m fall, 2km up Aniwaniwa Road.

#### Te Reinga Falls

35 km inland from Wairoa. Follow Tiniroto Road from Frasertown to Te Reinga.



## ROCKET VIEWING

📍 Blucks Beach (Blucks Pit Road)

For more information about viewing a rocket launch, please visit the Wairoa i-SITE website.

🌐 [www.visitwairoa.co.nz](http://www.visitwairoa.co.nz)

## WALKING & TRAMPING

★ There is a wide range of walking tracks in the Wairoa District. For more information refer to our walking and tramping brochure.

## SPORTS & RELAXATION

### MŌRERE HOT POOLS

📍 Located on SH2, north of Nuhaka

🌐 [www.morehotsprings.co.nz](http://www.morehotsprings.co.nz)

☎ +64 6 837 8856

🕒 Mon - Sun open from 10am (closing time varies according to season)



### WAIROA COMMUNITY CENTRE

📍 West end of Marine Parade

☎ +64 6 838 3086

Showers are available

🕒 Mon - Fri 8am - 5pm  
Sat-Sun 10am - 5pm (Summer)  
Sat-Sun 12pm - 5pm (Winter)

## SWIMMING, DIVING & SURFING

Find your perfect spot for swimming, diving and surfing on the Mahia Peninsula.

★ Some of the beaches in the Wairoa District have a dangerous undertow and are not suitable for swimming. Be careful!

## ENTERTAINMENT

### THE GAIETY THEATRE

📍 252 Marine Parade

🌐 [www.gaietytheatre.co.nz](http://www.gaietytheatre.co.nz)

🕒 Open Wednesday to Sunday & public holidays



### WAIROA CENTENNIAL LIBRARY

📍 212 Marine Parade

☎ +64 6 838 8450

🕒 Mon - Thurs 10am - 5pm, Fri 9.30am - 6pm  
Sat 10am - 12pm

### WAIROA MUSEUM

📍 142 Marine Parade

☎ +64 6 838 3108

🕒 Mon - Fri 10am - 4pm  
1st Saturday of the month only 10am - 12 noon

## EVENTS

### ARTS

**Gifted Sands - Mahia Māori Arts Exhibition**

🌐 [www.giftedsands.co.nz](http://www.giftedsands.co.nz)

### CULTURE

**Te Wairoa Pā Haka Festival**

🌐 [www.visitwairoa.co.nz](http://www.visitwairoa.co.nz)

**Wairoa Māori Film Festival**

🌐 [www.manawairoa.com](http://www.manawairoa.com)



## FARMING

### East Coast Farming with Technology Expo

☎ +64 6 838 7823, Sue Wilson

## A&P SHOW

📍 Wairoa Showgrounds, Ruataniwha Rd

☎ +64 6 838 7512, Dave Martin

🌐 [www.wairoashow.co.nz](http://www.wairoashow.co.nz)



Rodeo at the A&P Show

## FISHING & BOATING

### WAIROA

#### Wairoa Club Surfcasting Competition

📍 Whakamahia Beach

☎ +64 6 838 7414, Quintin Baty

### MAHIA

#### Mahia Fishing Club

📍 1 Pohutukawa Dr, Mahia 4198

🌐 [www.mahiafishingclub.com](http://www.mahiafishingclub.com)

### LAKE WAIKAREMOANA

#### Annual Family Fishing Contest

☎ +64 6 868 4756, Gisborne Tatapouri Sports Fishing Club

### MOHAKA

#### Whānau Fishing Competition

☎ +64 6 838 7414, Quintin Baty

## HUNTING

### Frasertown Pig Hunt

📍 Frasertown Tavern

☎ +64 6 838 6801

## SPORTS

### Waikare Challenge

Multisport event involving running, kayaking and cycling

🌐 [www.schoolground.co.nz/waikarechallenge](http://www.schoolground.co.nz/waikarechallenge)

### WBMC Drag Race

Annual Wairoa Motorcycle Drag Races

☎ +64 27 2787332

## WAIROA RACES

Country Racing at it's Best

📍 Wairoa Race Course

☎ +64 6 838 3999, Paul Toothill

## WATER-SKIING

### Bridge to Bridge Water skiing

Premier sprint Waterskiing Event

☎ +64 6 838 7309, Roz Thomas

### Learn to Waterski

☎ +64 21 279 2626, Len Unwin



Bridge to Bridge Water skiing

★ For more information about clubs, activities & events in the Wairoa District please visit the Wairoa i-SITE.

### Wairoa i-SITE

📍 Cnr SH2 & Queen Street, Wairoa

🌐 [www.visitwairoa.co.nz](http://www.visitwairoa.co.nz)

✉ [isitewairoa@wairoadc.govt.nz](mailto:isitewairoa@wairoadc.govt.nz)

☎ 0800 WAIROA (924 762)

☎ +64 6 838 7440

# HISTORY

## WAIROA

Wairoa in Māori means ‘Long Water’. Wairoa was originally a Māori settlement. The ancestral canoe Tākitimu travelled up the river and landed near where the Tākitimu meeting house now sits. The river was an important source of food for the community that grew on its banks.

The town site (then called Clyde) was purchased by the government in 1864 and sections were sold to settlers in 1866. Members of the Māori Pai Mārire (Hauhau) faith arrived in the district around the same time and Wairoa became a colonial military base. Battles were fought around Wairoa and Lake Waikaremoana. Māori land in the district and around the lake was later confiscated by the government despite many Wairoa Māori having fought for the Crown.

Development of the town was hindered by lack of roads and difficulty navigating the entrance to the Wairoa River. The land was converted into pastoral farms and later pine forestry, and dairy factories and freezing works were opened. However, Wairoa continued to be constrained by its isolation and reliance on rural industries vulnerable to economic downturns.

Today the Wairoa district has a population of 8,481. The main employer is the freezing works, owned by Talleys, with up to 700 employed at peak season, followed by agriculture, forestry and horticulture.

## WAIROA LIGHTHOUSE

The lighthouse was originally on Portland Island, off the southern end of Mahia Peninsula. It gave good service there over many years up to 1960 when lighthouses were progressively automated.



Wairoa Lighthouse