



**Date:** Tuesday, 9 May 2017  
**Time:** 1.30pm  
**Location:** Council Chamber, Wairoa District Council,  
Coronation Square, Wairoa

# **AGENDA**

## **Late Reports**

### **Ordinary Council Meeting**

**9 May 2017**

**Fergus Power**  
**Chief Executive Officer**

The agenda and associated papers are also available on our website: [www.wairoadc.govt.nz](http://www.wairoadc.govt.nz)

For further information please contact us 06 838 7309 or by email [info@wairoadc.govt.nz](mailto:info@wairoadc.govt.nz)

**Order Of Business**

**8    General Items.....3**

    8.14    Draft Submission to the Hawke's Bay Regional Council Annual Plan 2017 -  
            2018..... 3

## 8 GENERAL ITEMS

### 8.14 DRAFT SUBMISSION TO THE HAWKE'S BAY REGIONAL COUNCIL ANNUAL PLAN 2017 - 2018

**Author:** Kitea Tipuna, Economic Development and Engagement Manager

**Authoriser:** Fergus Power, Chief Executive Officer

**Appendices:**

1. Draft WDC Submission [↓](#)
2. Comparison of regional fresh water volumes [↓](#)
3. HBRC draft Annual Plan 2017 -2018 consultation document [↓](#)

#### 1. PURPOSE

- 1.1 To provide feedback on the draft Wairoa District Council submission to the Hawke's Bay Regional Council Annual Plan 2017 - 2018

#### RECOMMENDATION

The Economic Development & Engagement Officer RECOMMENDS that Council provides feedback on the draft Wairoa District Council submission to the Hawke's Bay Regional Council Annual Plan 2017 – 2018

#### EXECUTIVE SUMMARY

The submissions for the Hawke's Bay Regional Council (HBRC) draft Annual Plan 2017 – 2018 closes at 4.00pm on Friday 12 May. As such, the Wairoa District Council intends to make a submission. The HBRC Annual Plan consultation document is appended to this report as well as the draft submission. Feedback is invited on the draft submission and that feedback will be incorporated into the final submission which will be submitted before the deadline of 4.00pm, Friday, 12 May 2017.

#### 2. OPTIONS

- 2.1 THAT Council provide guidance and feedback on the draft WDC submission to be incorporated into the final submission.

#### 3. CORPORATE CONSIDERATIONS

##### Maori Standing Committee



- 3.1 The Maori Standing Committee has been invited to also contribute to the draft WDC submission and their feedback will also be incorporated into this final submission.

**Confirmation of statutory compliance**

In accordance with section 76 of the Local Government Act 2002, this report is approved as:

- a. containing sufficient information about the options and their benefits and costs, bearing in mind the significance of the decisions; and,
- b. is based on adequate knowledge about, and adequate consideration of, the views and preferences of affected and interested parties bearing in mind the significance of the decision.

**Signatories**

	
Kitea Tipuna Author	Fergus Power Approved by



Hawke's Bay Regional Council  
Private Bag 6006  
Napier 4142

09 May 2017

**Draft SUBMISSION TO THE  
HAWKE'S BAY REGIONAL COUNCIL ANNUAL PLAN 2017 - 2018**

Mayor Craig Little  
Wairoa District Council  
PO Box 54  
Wairoa  
06-838-7309  
[craig.little@wairoadc.govt.nz](mailto:craig.little@wairoadc.govt.nz)

**1.0 INTRODUCTION**

- 1.1 As the local territorial authority, The Wairoa District Council represents resident and non-resident ratepayers and the community at large of the Wairoa district. As such, we believe that the constituents whom we represent comprises a significant 'community of interest' in the *Hawke's Bay Regional Council Annual Plan 2017 – 2018 (Appendix 2)*.
- 1.2 The Wairoa District Council Māori Standing Committee also makes a supplementary submission which is attached below.
- 1.3 The Wairoa District Council is pleased to make this submission and we wish to speak to this submission.
- 1.4 The Wairoa District Council Māori Standing Committee also wish to speak to their submission alongside the Wairoa District Council.

**2.0 BACKGROUND**

- 2.1 The people of the Wairoa district have a long relationship with it's waterways and it can be described as a river town. Furthermore, the township and district take it's name from the Wairoa river. The importance of the river to the Wairoa community cannot be underestimated and it is with this in mind that this submission is framed.

Wairoa District Council, Coronation Square, PO Box 54, Wairoa 4160  
Telephone +64 6 838-7309, Email [info@wairoadc.govt.nz](mailto:info@wairoadc.govt.nz)

- 2.2 The Wairoa district also has the largest volume of surface fresh water in the entire Hawke's Bay region and it is not surprising that our waterways are important to the Wairoa people (see *Appendix 1: Fresh water comparisons for the Hawke's Bay*).
- 2.3 The rivers and lakes in the Wairoa district have cultural and social significance to the people of Wairoa. Steeped in tradition and history, the relationship that tangata whenua have with our waterways is so important and inextricably intertwined. The waterways are also a traditional food gathering places and when the health of the waterways are affected, this has a knock on effect upon the food sources found in these waterways. When the mauri of the waterways are affected, it is said that the mauri of the people is also affected.
- 2.4 Locals and visitors alike have shared many days swimming, rowing, fishing, boating, and basically enjoying the many sporting and recreational endeavours our waterways provide. This is an important part of Wairoa culture, our relationship with our waterways through recreational pursuits is also apart of who we are as Wairoa people.
- 2.5 The Wairoa District Council commends the various references within the Hawke's Bay Regional Council's (HBRC) Annual Plan 2017 -2018 consultation document. "Time to clean up", and "Too many of our rivers, lakes and streams are a disgrace and in some cases getting worse." The Wairoa District Council notes the HBRC's wish to "kick start and accelerate action on our hotspots". The Wairoa District Council also notes the specific reference to the Wairoa River and Lake Whakakā and the HBRC's want for "a better place for Wairoa people".

### **3.0 SUBMISSION**

- 3.1 The Wairoa District Council supports the intent of the HBRC's Annual Plan 2017 - 2018, which seeks to respond to the quality of waterways within the Hawke's Bay region, particularly the Wairoa River and Lake Whakakā.
- 3.2 The Wairoa District Council notes with caution that any increase in rates will have an impact on the community of Wairoa. However, we wish to also note that there needs to be action now to address the quality of our waterways. Investing in improving the quality of our waterways now seems to be a pragmatic solution.
- 3.3 If there is a requirement to prioritise a roll-out of work focused on the hot spots noted in the HBRC's Annual Plan consultation document, the Wairoa District Council certainly advocates for the Wairoa district being prioritised given that our district has by far the largest volume of surface fresh water within the entire region.
- 3.4 The Wairoa District Council also wishes to note Lake Tūtira, which is specifically referenced in the HBRC's Annual Plan 2017 – 2018 consultation document. Feedback from members of the Wairoa community (Facebook commentary in late April 2017) noted the poor state of the lake and how this now impacts on travellers on State Highway 2, between Wairoa and Napier. A copy of the Facebook commentary (which was sent to the HBRC) noted an ammonia like smell coming from Lake Tūtira during a particularly bad algal bloom. The impacts noted by Wairoa people say that drivers and children in cars were becoming nauseous as they drove past the lake and we note that the Hawke's Bay District Health Board confirmed a toxic bloom in February and warned visitors to avoid contact with the water. Although not directly within the Wairoa district, work on Lake Tūtira also needs to be prioritised. The Wairoa community does have a strong relationship with Lake Tūtira and given the recent toxic algal bloom, Wairoa people are being directly affected by the poor quality of the lake.

- 3.5 The Wairoa District Council believes that more should be done in the Wairoa district. Given that the district has the largest volume of surface fresh water in the entire Hawke's Bay region, more work should be done within the district, including, improving the quality of other Wairoa district waterways, more research funding prioritised for the Wairoa district, more riparian funding prioritised for the Wairoa district and, in the interim, more regular clearance of the Wairoa River mouth, until such time as a more permanent solution for the river mouth issues is identified.

#### 4.0 RECOMMENDATIONS

- 4.1 The Wairoa District Council recommends the following:

- 4.1.1 THAT it supports a rate increase to fast track environmental projects noted in the HBRC's Annual Plan 2017 – 2018 consultation document, particularly the Wairoa River, Lake Whakakī and Lake Tūtira.
- 4.1.2 THAT there needs to be considerably greater investment in the Wairoa district given that the Wairoa district has the largest volume of surface fresh water within the entire Hawke's Bay region. Most equitably, in our view, any funding source (and allocation) for resource management purposes should not be based upon a *pro rata* population approach, but a 'scale of the natural resource subject to protection', approach.

**SUPPLEMENTARY SUBMISSION FROM THE WAIROA DISTRICT COUNCIL MĀORI STANDING COMMITTEE**

The Wairoa District Council Māori Standing Committee (MSC) would further like to support the submission submitted by His Worship the Mayor on behalf of the Wairoa District Council. The MSC also supports the intent of the HBRC's Annual Plan 2017-2018, which seeks to respond to the quality of waterways within the Hawke's Bay region, particular the Wairoa River and Lake Whakakī. The MSC also wish to speak to this submission in support of the Wairoa District Council.

The MSC is a committee of the Council. The MSC acts as a check and balance on Council processes, especially on those matters requiring a Māori perspective, as well as an advisory body for Council on matters requiring a Māori perspective. This includes the development and revision of Council policies and strategies.

Representation of the MSC refers to the mechanisms which provide for individual and groups authorised to speak for tangata whenua on behalf of their respective marae within eight takiwā (district) determined by the Wairoa District Council. This allows tangata whenua to take issues to their takiwā representatives or the MSC, who can then advocate for tangata whenua to Council and other organisations (as appropriate).

The MSC is made up of nine (9) independent representatives decided at a series of hui-ā-takiwā (district hui) of hapū/marae and are endorsed representatives to the Committee. The MSC membership also includes His/Her Worship the Mayor (ex-officio) and two elected Councillors. The purpose of the MSC, according to the Terms of Reference, is to:

- Advocate on behalf of tangata whenua to local, regional and national bodies as appropriate;
- Consider governance issues relating to Council obligations to tangata whenua; and
- Investigate and report to the Council on any issues that the Māori Standing Committee considers necessary that may have an implication for tangata whenua.

The MSC acknowledges that the Māori perspective is holistic, based upon the law of nature, but it also highlights the connection of the people and the river to the environment. It is through this holistic viewpoint that forms the relationship of Māori with the Wairoa River and Lake Whakakī, and how it fundamentally shapes, sustains and nourishes the lifestyle of local Māori.

The Wairoa River remains an integral part of Māori history, traditions and lifestyle. The full Māori name for the river is Te Wairoa Hōpūpū Hōnengenenge Matangi Rau (the long, bubbling, swirling, uneven waters). It has an approximate catchment area of 3,660 km<sup>2</sup>, making it one of the biggest catchment areas in the Hawke's Bay region. The major tributaries include the Hangaroa River, the Ruakituri River, the Mangapoike River, the Mangaruhe River, the Waiau River and the Waikaretaheke River. The Wairoa River starts at Te Reinga Falls, where the Hangaroa River and the Ruakituri River merge, it then travels approximately 65 kilometres to the coast just south of the township of Wairoa.

The importance of the Wairoa River to Māori can be surmised as "awa tapu (sacred lore, beliefs, spiritual strength), awa korero (legends, histories, communication), awa tipua (power, character, unrelenting), awa haereere (pathway, travel, communication), awa tangata (nature, identity, behaviour), awa ora (sustenance, life blood, life source)" – (K Hammond, 2014, Te Arawhiti).

For Māori, any environmental impact on the river has an immediate influence on the mauri of the people and the river. We have seen the environmental impacts caused by "land clearance/deforestation of native bush, forestry – pine tree plantations, agricultural – irrigation, run-off, laws and bylaws that permitted such activities" (K Hammond, 2014, Te Arawhiti), as a result these impacts have included "the degradation of the water quality, changes in depth, flow and content and the decline and loss of native species" (K Hammond, 2014, Te Arawhiti). The MSC recognises the importance of the Wairoa River to all people, hence the saying 'He Awa, He Mauri, He Oranga'.



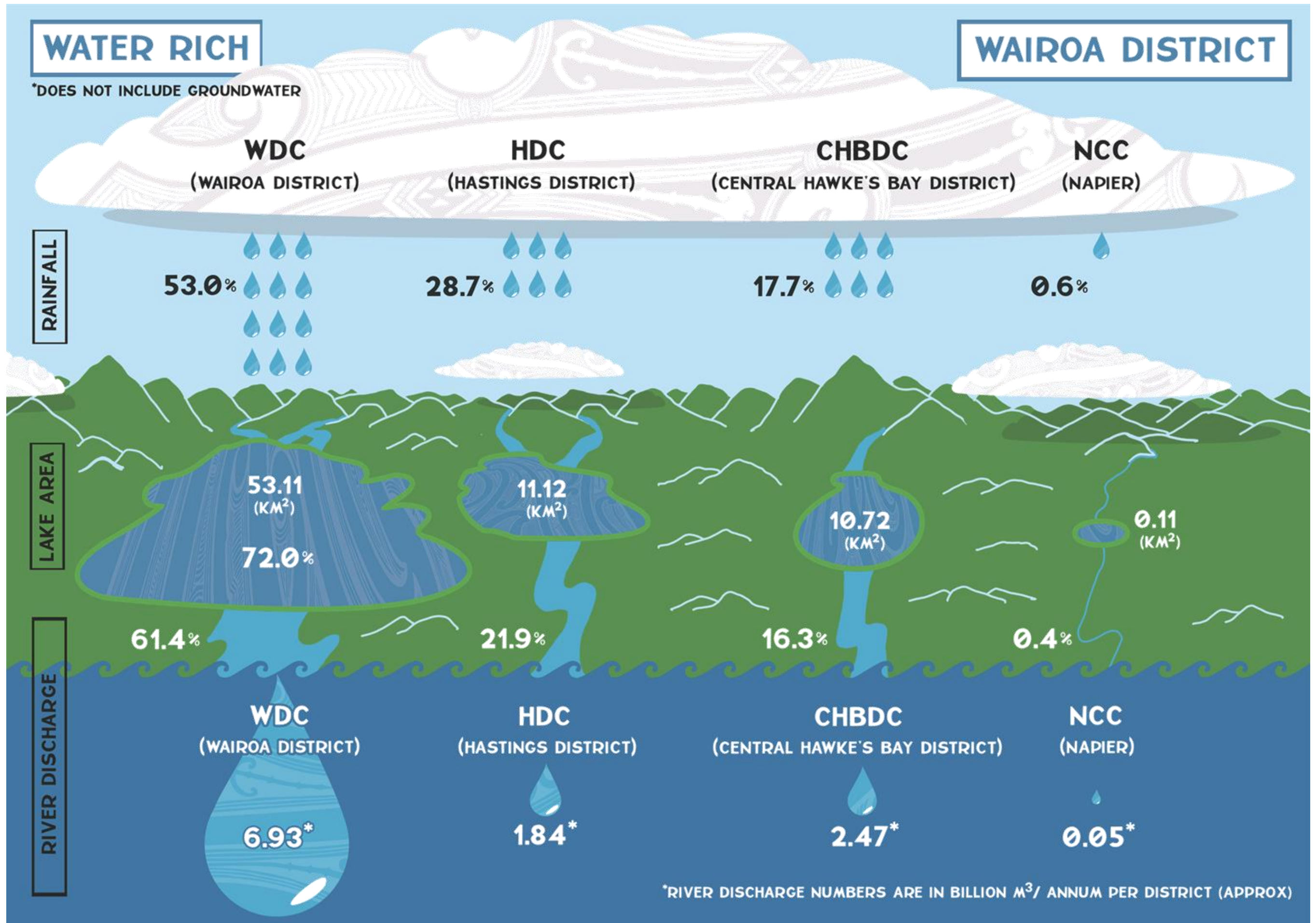
The Wairoa River remains an important life source for all living things. Any change to the environment and the ecosystem has a flow on affect for all concerned for the well-being of the river. Therefore, the MSC would like to see a response to the different types of contaminants going into the Wairoa River, to see a significant improvement in the water quality and to see how the cultural, economic and social values can be measured.

Situated 17 kilometres north-east of Wairoa is Lake Whakakī, which has cultural and spiritual significance to the local hapū of Ngāi Te Ipu, Ngāti Hinepua and Ngāti Hine. The lake forms part of several lagoons including Ohuia, Waihoratuna, Wairau, Te Paeroa and Pātangata, as well as the Rāhui channel. It covers an area of approximately 600 hectares and is the largest coastal lake on the east coast of the North Island. Lake Whakakī remains an area steeped in Māori history and tradition.

Local Māori are still actively involved in the tradition of sustainable management of their natural resources and ecosystem at Lake Whakakī, which has seen a restoration project starting in the 1990's resulting in the regeneration of the ecology of the lake and its environs.

Recent times have seen water from the catchment area littered with forestry slash and other debris, ultimately blocking culverts and waterways which causes flooding and contaminates the settlement area of Lake Whakakī. This impacts on the ecosystem, the traditional practices of gathering food and the general well-being of the lake.

In conclusion, the MSC supports the recommendations put forward by the Wairoa District Council, particularly the Wairoa River and Lake Whakakī.



# PLANNING AHEAD FOR 2017-18 TIME TO CLEAN UP

In October 2016 a new Hawke's Bay Regional Council was elected. This council has resolved to provide stronger, more visible and connected regional leadership in protecting and enhancing Hawke's Bay's remarkable environment.



# WE NEED YOUR HELP

## Improve Our Region: OTHER BENEFITS

### FRESHWATER

Increased science effort on our rivers, lakes and estuaries to support restoration programmes and monitor our progress over time. Our rivers and lakes need to be 'swimmable'.

### COMMUNITY ENGAGEMENT

Improve the way we engage and inform our communities, including the support and servicing of local Tāngata Whenua representatives, committees and schools.

### BIODIVERSITY

Effective pest control helps to improve the region's natural diversity - bird numbers and tree health have improved dramatically. We plan to do more predator control work. We'll also strengthen our efforts to keep more soil on the land where it belongs, and out of our waterways.

### HAWKE'S BAY PARKS and TRAILS

Work includes supporting a bridge across the Tukituki River between River Road and Moor Road, to mitigate safety issues on Waimara Road and increase the use of our trails network.

Too many of our rivers, lakes and streams are a disgrace and in some cases getting worse. We need to fix them and we need your help to do this.

We have big challenges in our environment and our council faces difficult choices with our limited resources. We have identified six hot-spot areas we want to give special focus to, without taking our eye off other issues in our region.

We are proposing a one-off rates increase to create a \$1 million environmental kick-start fund to accelerate action on our hot-spots. As part of this journey, we're going to comprehensively review our business to return to our core competencies, find off-setting savings and efficiencies, as well as additional opportunities to leverage government, philanthropic and community funds to meet our shared goals.

We will lay out our approach for the next ten years in 2018's Long Term Plan. But we need to get started.

The work we need to do now requires an increase of around \$20 per ratepayer, or \$1.22 million. A further \$8 per ratepayer or \$500,000 is required to maintain the council's core business, giving us a total average rate rise of \$28 per ratepayer for the year.

Please give us your comments on these proposals and options.

Rex Graham

Chair, Hawke's Bay Regional Council

## Six Environment Hot Spots: LET'S CLEAN UP

### 1. LAKE TŪTIRA

Develop a comprehensive action plan to restore the lake and prevent future contamination from the wider landscape. Our goal is to make this a place that families can return to, and where children can swim.

#### A CLEAN AND HEALTHY LAKE TŪTIRA

### 2. AHURIRI ESTUARY

Work with Napier City Council, Māori, Department of Conservation, other landowners and businesses in this area - a national treasure - to clean up water entering the estuary, remove pests and restore the environment to good health.

#### A HEALTHIER ESTUARY FOR FISH, BIRDS AND PEOPLE

### 3. WHAKAKI LAKE and WAIROA RIVER

Develop a catchment enhancement plan to improve land use opportunities, and reduce sediment from erosion.

#### A BETTER PLACE FOR WAIROA PEOPLE

### 4. LAKE WHATUMA and TUKITUKI CATCHMENT

Develop an environmental enhancement plan for riparian, wetland and biodiversity improvement.

#### HEALTHIER WATER IN TUKITUKI CATCHMENT

### 5. KARAMŪ STREAM

Additional funding will accelerate the current riparian enhancement programme. We want to improve in-stream ecology and reduce contaminants entering the water.

#### IMPROVE THE STATE OF KARAMŪ STREAM

### 6. MARINE ENVIRONMENT

We manage the coastal marine environment for ecosystem health, but we know too little about it. With your help we want to kick start a programme of marine research - agreed by recreational, customary and commercial groups - to help us better manage our marine environment.

#### BE PROUD OF OUR MARINE ENVIRONMENT

## ANNUAL PLAN PROPOSAL 2017-18

The 2017-18 Annual Plan comes into play from 1 July. A proposed average rate increase of 9.88% compares to the forecast increase of 5.51% in the last Long Term Plan, for the 2017-18 period.

The Council receives a large portion of annual income from Napier Port, heavily subsidising the cost of our services to ratepayers. Thanks to our booming regional economy, the Port is enjoying unprecedented growth. This will bring its own challenges. To support this growth, the Port must invest in infrastructure and dividend payments may reduce for a period of time.

Our role as Councillors is to consider all options to meet the needs and aspirations of the Hawke's Bay community, to make real progress in priority 'hot spots' and to continue our efforts to safeguard Hawke's Bay's natural environment.

	Sample Properties	Capital Value	Land Value	2017/18 Proposed Rates	Increase from 2016/17
RESIDENTIAL	Taradale	\$430,000	\$230,000	\$331.34	\$25.11
	Hastings	\$430,000	\$200,000	\$300.03	\$29.00
	Wairoa	\$230,000	\$54,000	\$114.30	\$15.60
	CHB	\$293,000	\$113,000	\$110.29	\$16.80
	Napier Hill	\$760,000	\$340,000	\$270.78	\$24.10
	Napier South	\$245,000	\$155,000	\$244.72	\$21.20
	Flaxmere	\$190,000	\$58,000	\$158.28	\$3.29
	Havelock North	\$750,000	\$320,000	\$267.11	\$33.10
	Napier Hotel	\$3,100,000	\$860,000	\$1,915.33	\$195.50
	Napier Shop	\$1,710,000	\$530,000	\$811.84	\$110.00
CIAL					

